

# SFY 2022 Annual Listing of Obligated Projects

July 2021 - June 2022

---



p: 574.287.1829  
f: 574.239.4072  
[www.macog.com](http://www.macog.com)

# TABLE OF CONTENTS

|                                    |    |
|------------------------------------|----|
| INTRODUCTION.....                  | 3  |
| SUMMARY OF TOTAL OBLIGATIONS.....  | 4  |
| LPA OBLIGATED PROJECT SUMMARY..... | 5  |
| County Breakdown.....              | 5  |
| Funding Type Breakdown.....        | 6  |
| Project Type Breakdown.....        | 7  |
| LPA PROJECT PROFILES.....          | 8  |
| ELKHART COUNTY.....                | 9  |
| KOSCIUSKO COUNTY.....              | 19 |
| MARSHALL COUNTY.....               | 27 |
| ST. JOSEPH COUNTY.....             | 36 |
| APPENDICES.....                    | 49 |



## INTRODUCTION

The Michiana Area Council of Governments (MACOG) is the regional planning agency responsible for transportation planning in Elkhart, Kosciusko, Marshall, and St. Joseph Counties in Indiana. MACOG is the designated Metropolitan Planning Organization (MPO) for St. Joseph and Elkhart Counties, and serves as the Rural Planning Organization (RPO) for Kosciusko and Marshall Counties.

As the designated MPO for the region, Federal law requires MACOG to prepare a Transportation Improvement Program (TIP) to indicate how the Metropolitan Transportation Plan (MTP) will be implemented. The TIP identifies projects programmed regionally for federal funding under several programs, including the Surface Transportation Block Grant Program (STBG), Highway Safety Improvement Program (HSIP), Congestion Mitigation Air Quality (CMAQ), Federal Transit Administration Section 5307, 5309, 5310 and 5339 Programs, and other federal transportation programs.

MPOs are required under the Bipartisan Infrastructure Law (BIL) to publish an annual listing of projects, for which funds have been obligated, in the preceding year, as a record of project delivery and a progress report for public information and disclosure.

An obligation is the Federal government's legal commitment to pay the Federal share of a project. Projects for which funds have been obligated are not necessarily initiated or completed in the program year, and the amount of the obligation will not necessarily equal the total cost of the project. For Federal Transit Administration (FTA) projects, obligation occurs when the FTA grant is awarded. For Federal Highway Administration (FHWA) projects, obligation occurs when a project agreement is executed and the state or grantee requests that the funds be committed to a project.

In addressing the BIL requirements, this report lists all transportation projects in the region that had obligations during state fiscal year 2022 (July 1, 2021 – June 30, 2022). The Annual Listing of Obligated Projects is consistent with the project listing in the TIP. This includes project description, designation number, as well as the amount of funds programmed in the TIP and its funding source; see Appendix B for a list of applicable funding sources.

# SUMMARY OF OBLIGATED PROJECTS

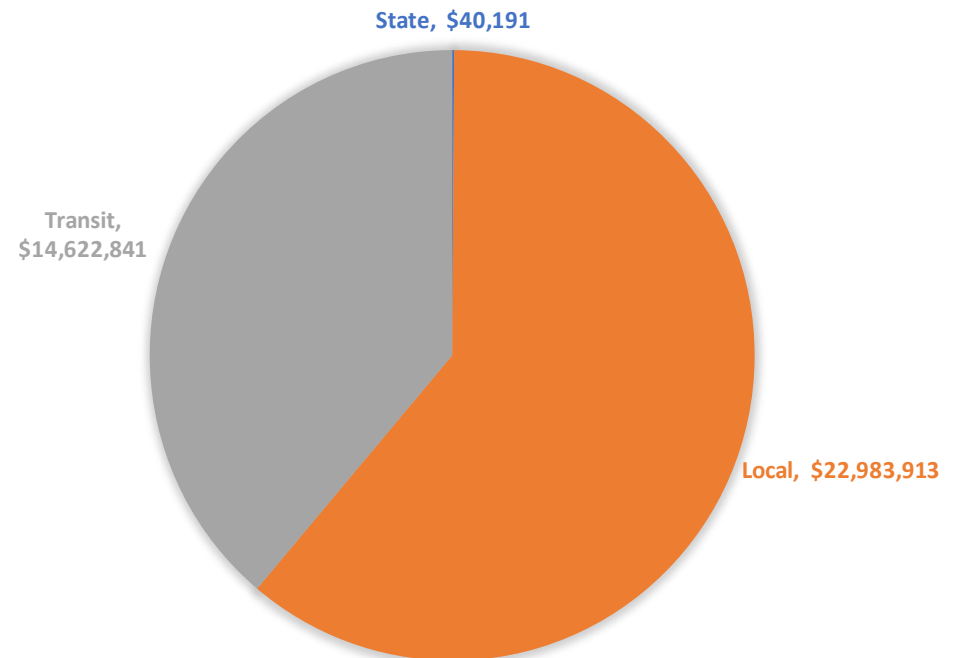
## Total Obligation

Projects are obligated by three sponsoring agencies in the MACOG Region: Local Public Agencies (LPAs), Transit, and the Indiana Department of Transportation (INDOT). Figure 1 shows the breakdown of total obligations in the MACOG region by sponsoring agency. Obligations for SFY 2022 totaled \$37.6 million. State sponsored projects had \$40,191 in obligations, locally sponsored projects reached over \$22.9 million, and transit projects saw obligations totaling \$14.6 million. Note that State sponsored obligations were significantly lower than their counterparts as well as obligations in previous years. This is largely due to the use of State funds over Federal funds.

The remainder of this report will focus on LPA sponsored projects, showing a breakdown by county, funding source, and project type. Additionally, profile sheets are included for each project and categorized by county. These sheets show project location, type, and obligation amounts.

A more detailed breakdown of obligations within SFY 2022 can be found in Appendix C.

FIGURE 1: TOTAL OBLIGATIONS BY SPONSOR



# LPA OBLIGATED PROJECT SUMMARY

## Funding Breakdown by County

In SFY 2022, there were 29 projects sponsored by LPAs in the MACOG region that saw obligations, for a total of roughly \$22.9 million. These LPAs included the cities of Goshen, Plymouth, South Bend, and Warsaw; the towns of Culver, Bourbon, and Winona Lake; the counties of Elkhart, Kosciusko, Marshall, and St. Joseph. Figure 2 shows the total funds obligated in each county. Elkhart County had the highest amount of obligations at \$11.5 million, or 50% of LPA obligations. St. Joseph and Marshall Counties each had over \$4 million in obligations, equating to 21% and 17% of LPA obligations, respectively. Kosciusko County saw 12% of LPA obligations, at \$2.7 million.

Figure 3 shows the total number of projects obligated in each county. 11 of the obligated projects, or 38% percent of projects, were in St. Joseph County. Elkhart County has 7 obligated projects (24%), Marshall County has 6 obligated projects (21%), and Kosciusko County had 5 obligated projects (17%).

When comparing Figures 2 and 3, you'll note that a large monetary amount of obligations does not necessarily translate to a high number of projects. The largest project in Elkhart County that obligated was the \$6 million construction phase for the Wilden Avenue Reconstruction in Goshen, which is half of Elkhart County's obligations for FY 2022.

FIGURE 2: TOTAL LPA OBLIGATIONS BY COUNTY

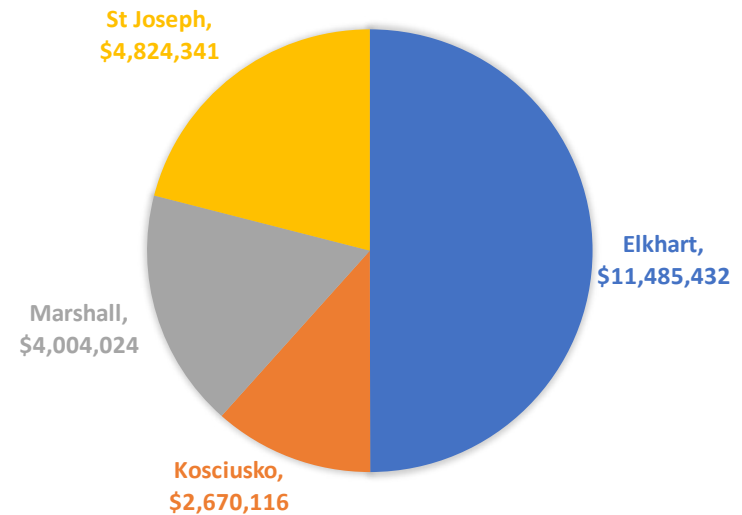
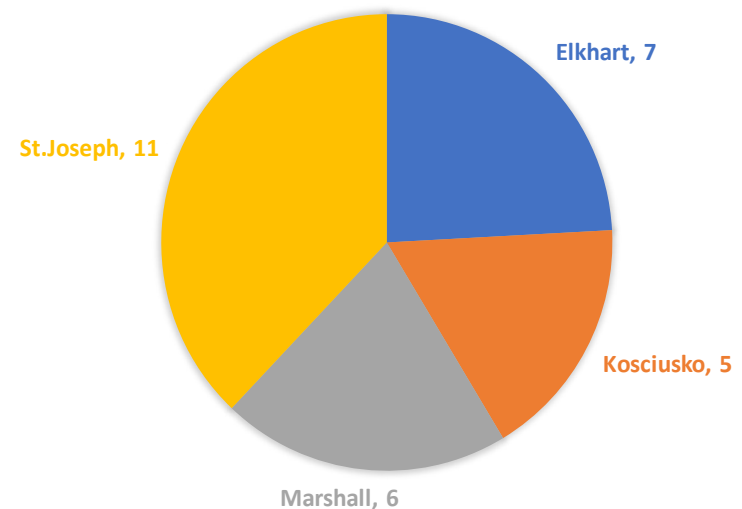


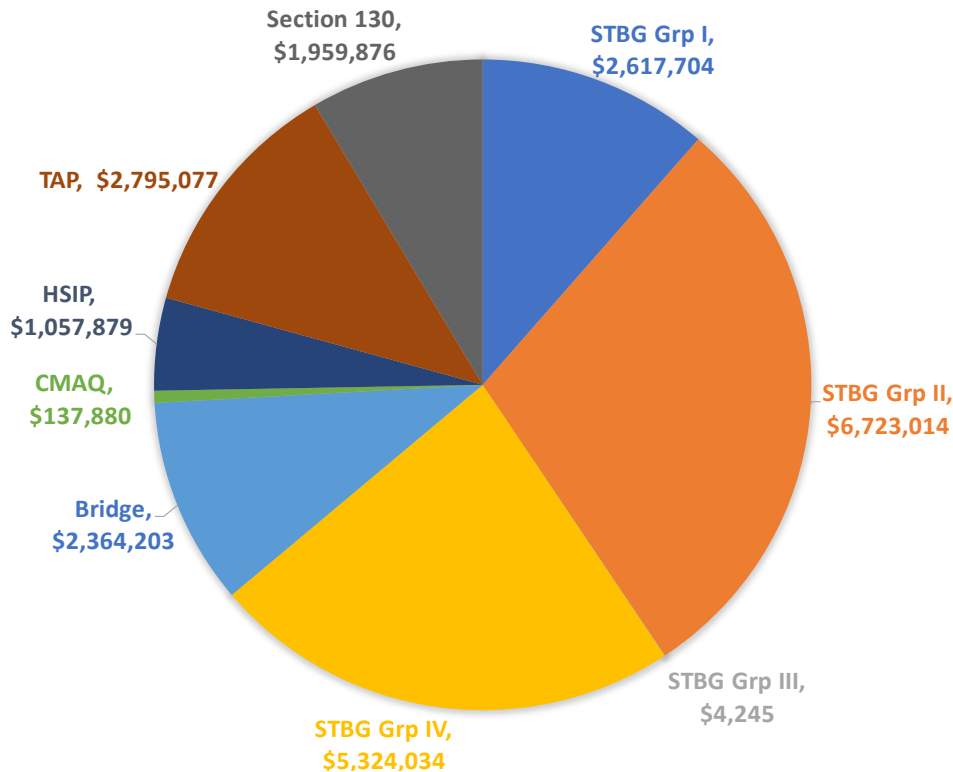
FIGURE 3: TOTAL COUNT OF LPA PROJECTS BY COUNTY



### Funding Type Breakdown

There were 9 funding sources used on obligated projects in SFY 2022 (see Appendix B for descriptions of each funding source). Figure 4 depicts the amount of federal funds obligated by funding type. The Surface Transportation Block Grant Program (STBG) Groups I-IV had the most obligated at approximately \$14.7 million, or 63% of obligations. Transportation Alternative Program (TAP) funding amounted to roughly \$2.8 million (12%) and Bridge funding totaled nearly \$2.4 million (10%). Highway Safety Improvement Program (HSIP), Congestion Mitigation Air Quality (CMAQ), and Section 130 funding totaled just short of \$3.2 million.

**FIGURE 4: TOTAL LPA OBLIGATIONS BY FUNDING TYPE**



**FIGURE 5: TOTAL COUNT OF LPA PROJECTS BY FUNDING TYPE**

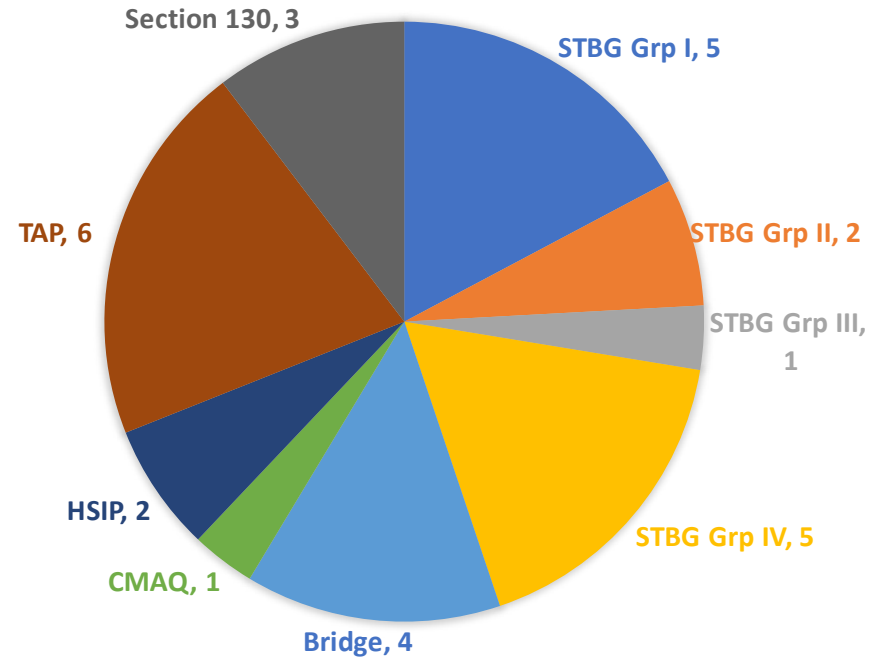


Figure 5 shows the total number of obligated projects by funding source. STBG Groups I - IV had the most projects obligated at 13 projects, or 45% of total projects.

TAP funding was also frequently utilized with 6 projects, or 21% of total projects. A large number of these were trail and sidewalk type projects in Marshall County, which is a byproduct of their 2019 Stellar Communities award from Indiana’s Office of Community and Rural Affairs (OCRA) and INDOT.

Bridge funding trailed closely with 4 projects (14%), followed by Section 130 with 3 projects, HSIP with 2 projects, and CMAQ with 1 project.

## Project Type Breakdown

Projects can also be broken down by project type. There were 6 project types that obligated in SFY 2022; Local Roads, Bridge, Safety, Intersection, Traffic Signals, and Bike/Pedestrian Facilities. See Appendix A for more information on each project type.

Figure 6 shows the total funds obligated in SFY 2022 by project type. Local road projects had the most funding obligated at nearly \$9.1 million, or 39% of total funding. Bridge projects had the second highest obligations at roughly \$5 million, or 22% of total funding. In fact, each county in the MACOG region had at least one bridge type project in FY 2022. Bike/pedestrian facilities and intersection improvements each had close to \$3 million in obligations, followed by safety at \$2 million and traffic signals at \$1 million.

Figure 7 shows the total number of obligated projects by project type. In this instance, the monetary amount of obligations (Figure 6) and the number of obligated projects (Figure 7) have relatively similar breakdowns when broken down by project type. The only major difference is that bike/pedestrian facilities have a great piece of the pie, while local roads have a smaller peices, when broken down by the number of projects. While the traffic signal project makes up a small percentage in both figures, this was a rather impactful project in South Bend, as it led to the installation of nearly 140 school zone flashing beacons around 40 schools across the City.

The following pages include project profiles, with detailed maps for each project, highlighting the project’s DES number, location, sponsor, TIP programmed funding, and obligation amount. The areal imagery for the mapping was collected in calendar year 2021 and highlights many of the completed or under construction projects.

FIGURE 6: TOTAL LPA OBLIGATIONS BY PROJECT TYPE

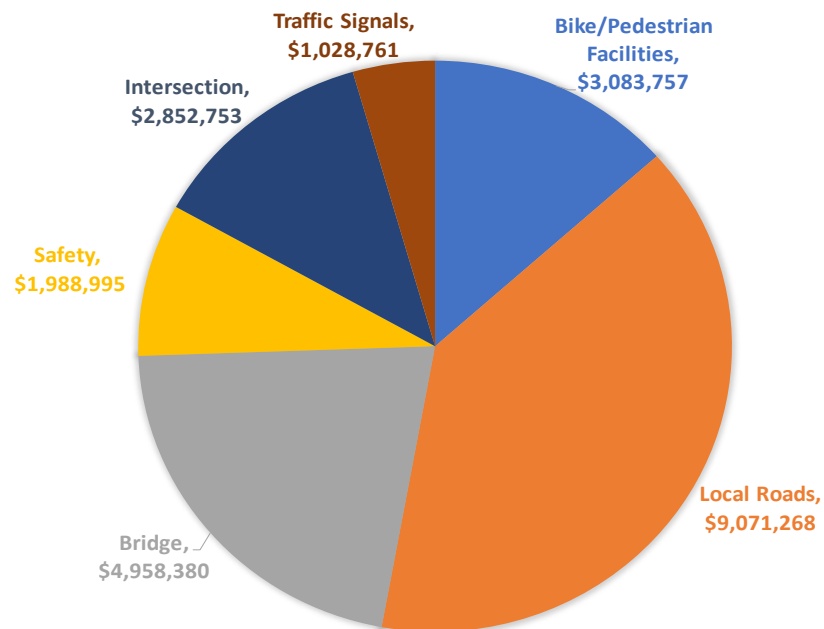
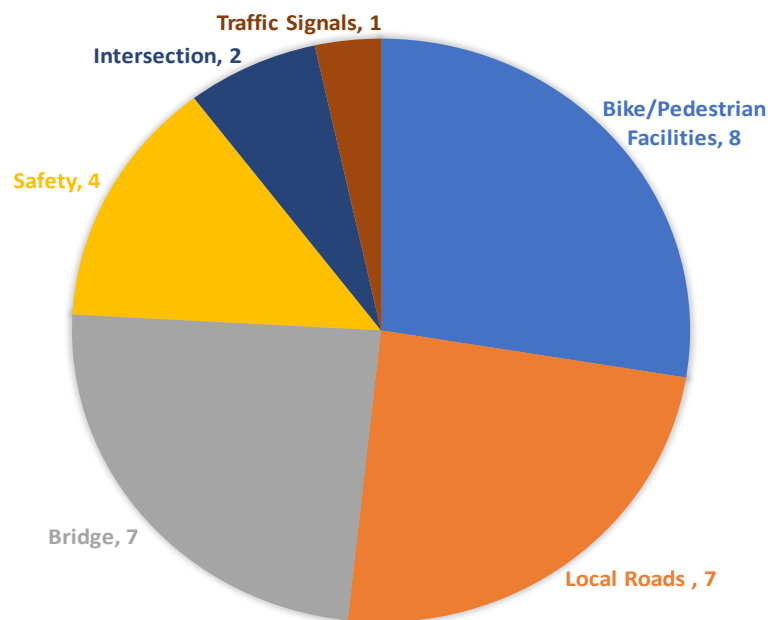


FIGURE 7: TOTAL COUNT OF LPA PROJECTS BY PROJECT TYPE



# LPA PROJECT PROFILES



ELKHART COUNTY



### Local Public Agency (LPA) Obligated Projects State Fiscal Year 2022

| DES #   | Project Description / Location                                     | Sponsor                  | County  | Project Type | Funding Type | Federally Programmed | Previously Obligated | SFY 2022 Obligated | Total Obligation | Unobligated Balance |
|---------|--|--------------------------|---------|--------------|--------------|----------------------|----------------------|--------------------|------------------|---------------------|
| 1700309 | Bridge 152 on Mishawaka Rd over Yellow River                       | Elkhart County           | Elkhart | Bridge       | STBG Grp IV  | \$ 2,990,338         | \$ 412,556           | \$ 2,577,782       | \$ 2,990,338     | \$ -                |
| 1400715 | Wilden Ave: Rock Run Creek to 6th St                               | Goshen                   | Elkhart | Local Road   | STBG Grp II  | \$ 7,073,332         | \$ 1,043,478         | \$ 6,029,854       | \$ 7,073,332     | \$ -                |
| 2100021 | College Ave from 9th St to US 33                                   | Goshen                   | Elkhart | Local Road   | STBG Grp II  | \$ 7,633,160         | \$ -                 | \$ 693,160         | \$ 693,160       | \$ 6,940,000        |
| 1801265 | Beaver Lane at NS RR DOT #510019A                                  | Goshen                   | Elkhart | Safety       | Section 130  | \$ 703,863           | \$ 36,000            | \$ 703,863         | \$ 739,863       | \$ -                |
| 1900391 | Madison St at NS RR DOT #510039L                                   | Goshen                   | Elkhart | Safety       | Section 130  | \$ 445,390           | \$ 18,000            | \$ 425,390         | \$ 443,390       | \$ 2,000            |
| 2003071 | Bridge #233 on CR 36 over Yellow Creek                             | Elkhart County           | Elkhart | Bridge       | Bridge       | \$ 1,274,957         | \$ -                 | \$ 224,760         | \$ 224,760       | \$ 1,050,197        |
| 2101279 | Apple Rd in Osceola DOT #522517T & CR 29 in New Paris DOT #533516S | Norfolk Southern Railway | Elkhart | Safety       | Section 130  | \$ 830,623           | \$ -                 | \$ 830,623         | \$ 830,623       | \$ -                |



FIGURE 8: ELKHART COUNTY - OBLIGATIONS BY PROJECT TYPE

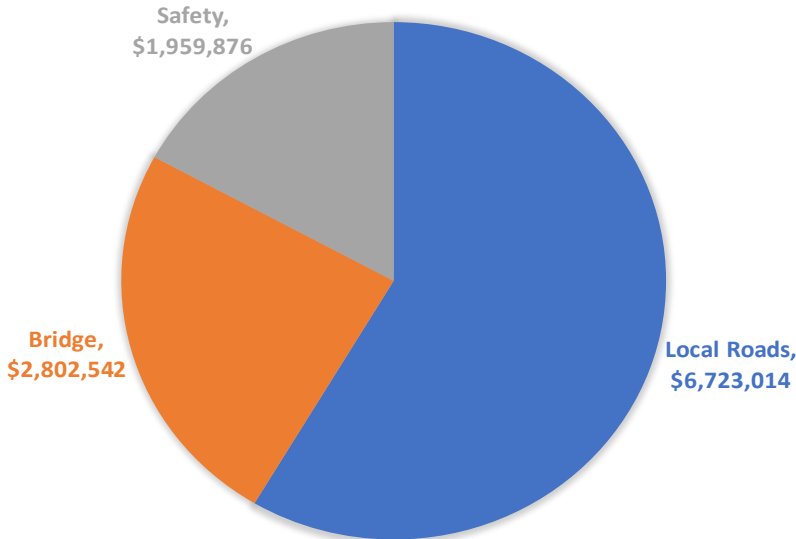
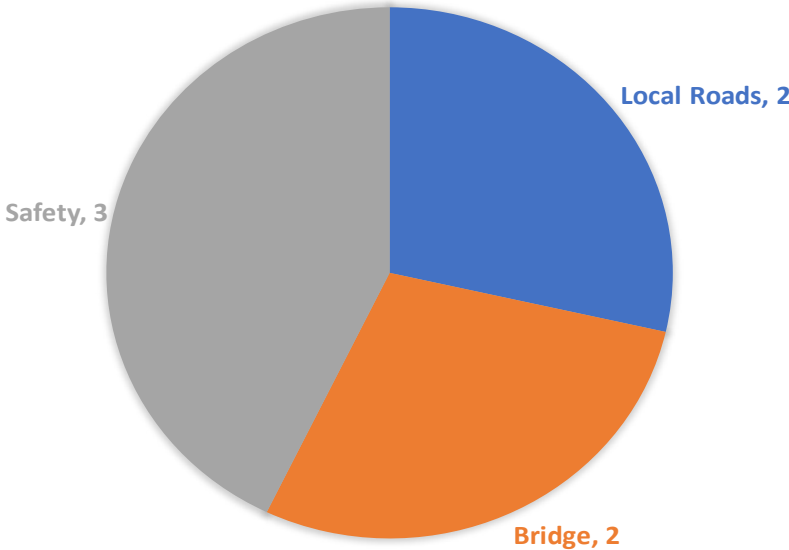


FIGURE 9: ELKHART COUNTY - COUNT OF PROJECTS BY PROJECT TYPE



**DES #:** 1700309

**Project Location:** Bridge 152 on Mishawaka Rd over Yellow River

**Sponsor:** Elkhart County

**County:** Elkhart



---

### **Funding**

Total Federal Funds: \$2,990,338

Funding Type(s): STBG Grp IV

---

### **Obligation**

Previous FY: \$412,556

SFY 2022: \$2,577,782

Total: \$2,990,338

---

### **Unobligated Balance**

Total Unobligated: \$-



DES #: 1400715

Project Location: Wilden Ave - Rock Run Creek to 6th St

Sponsor: Goshen

County: Elkhart



LOCAL ROAD



---

### Funding

Total Federal Funds: \$7,073,332

Funding Type(s): STBG Grp II

---

### Obligation

Previous FY: \$1,043,478

SFY 2022: \$6,029,854

Total: \$7,073,332

---

### Unobligated Balance

Total Unobligated: \$-



**DES #:** 2100021

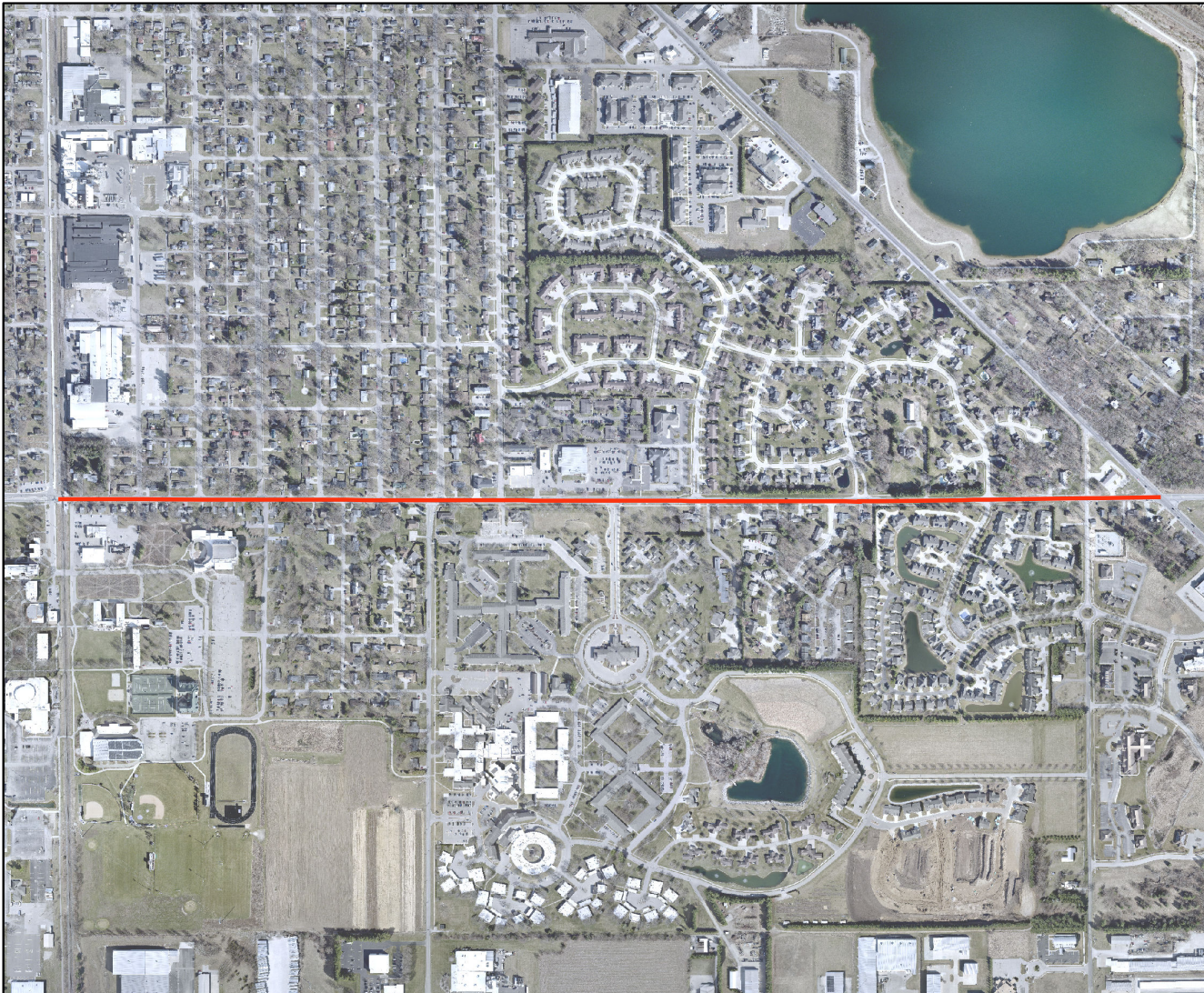
**Project Location:** College Avenue from 9th St and US 33

**Sponsor:** Goshen

**County:** Elkhart



LOCAL ROAD



---

### Funding

Total Federal Funds: \$7,633,160

Funding Type(s): STBG Grp II

---

### Obligation

Previous FY: \$-

SFY 2022: \$693,160

Total: \$693,160

---

### Unobligated Balance

Total Unobligated: \$6,940,000



DES #: 1801265

Project Location: Beaver Lane at NS RR DOT #510019A

Sponsor: Goshen

County: Elkhart



---

### Funding

Total Federal Funds: \$703,863

Funding Type(s): Section 130

---

### Obligation

Previous FY: \$36,000

SFY 2022: \$703,863

Total: \$739,863

---

### Unobligated Balance

Total Unobligated: \$-



**DES #:** 1900391

**Project Location:** Madison St at NS RR DOT #510039L

**Sponsor:** Goshen

**County:** Elkhart



Safety



---

### Funding

Total Federal Funds: \$445,390

Funding Type(s): Section 130

---

### Obligation

Previous FY: \$18,000

SFY 2022: \$425,390

Total: \$443,390

---

### Unobligated Balance

Total Unobligated: \$2,000



DES #: 2003071

Project Location: Bridge #233 on CR 36 over Yellow Creek

Sponsor: Elkhart County

County: Elkhart



BRIDGE



---

### Funding

Total Federal Funds: \$1,274,957

Funding Type(s): Bridge

---

### Obligation

Previous FY: \$-

SFY 2022: \$224,760

Total: \$224,760

---

### Unobligated Balance

Total Unobligated: \$1,050,197

DES #: 2101279

Project Location: Apple Rd in Osceola DOT #522517T & CR 29 in New Paris DOT #533516S

Sponsor: Norfolk Southern Railway

County: Elkhart



---

### Funding

Total Federal Funds: \$830,623

Funding Type(s): Section 130

---

### Obligation

Previous FY: \$-

SFY 2022: \$830,623

Total: \$830,623

---

### Unobligated Balance

Total Unobligated: \$-



 KOSCIUSKO COUNTY 

**Local Public Agency (LPA) Obligated Projects  
State Fiscal Year 2022**

| DES #   | Project Description / Location                                 | Sponsor          | County    | Project Type             | Funding Type | Federally Programmed | Previously Obligated | SFY 2022 Obligated | Total Obligation | Unobligated Balance |
|---------|--|------------------|-----------|--------------------------|--------------|----------------------|----------------------|--------------------|------------------|---------------------|
| 1802917 | Bridge No 161 on CR200S over Walnut Creek                      | Kosciusko County | Kosciusko | Bridge                   | Bridge       | \$ 1,032,000         | \$ 206,560           | \$ 48,000          | \$ 254,560       | \$ 777,440          |
| 1802784 | Hickory St from Market St to Main St                           | Warsaw           | Kosciusko | Safety                   | HSIP         | \$ 674,400           | \$ 646,529           | \$ 29,118          | \$ 675,647       | -                   |
| 1400786 | E Market St from Hickory to Bronson St                         | Warsaw           | Kosciusko | Local Road               | STBG Grp III | \$ 1,773,685         | \$ 1,769,440         | \$ 4,245           | \$ 1,773,685     | -                   |
| 1600788 | Intersection of Argonne Rd, Winona Ave, Kings Hwy and Park Ave | Winona Lake      | Kosciusko | Intersection Improvement | STBG Grp IV  | \$ 3,068,738         | \$ 527,986           | \$ 2,540,753       | \$ 3,068,739     | -                   |
| 1702866 | Bridge #227 on S Hand Street over Walnut Creek                 | Kosciusko County | Kosciusko | Bridge                   | Bridge       | \$ 1,550,479         | \$ 180,178           | \$ 48,000          | \$ 228,178       | \$ 1,322,302        |

FIGURE 10: KOSCIUSKO COUNTY - OBLIGATIONS BY PROJECT TYPE

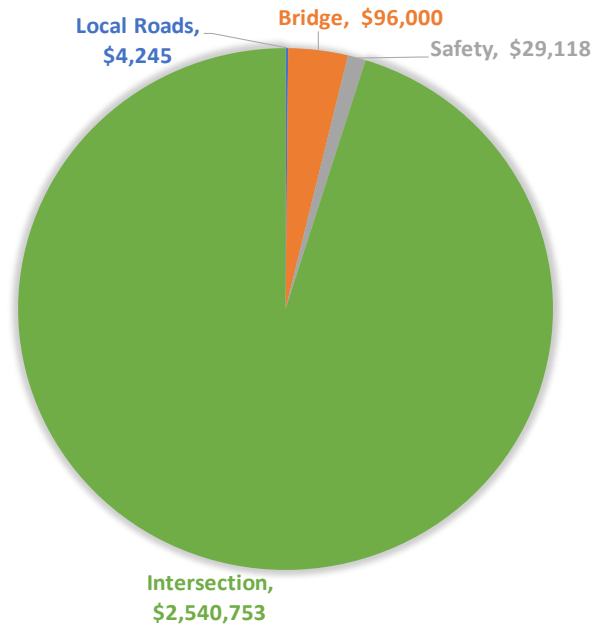
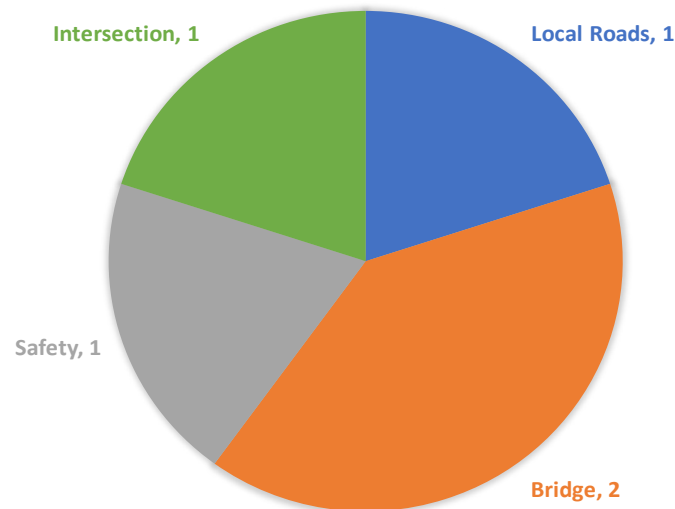


FIGURE 11: KOSCIUSKO COUNTY - COUNT OF PROJECTS BY PROJECT TYPE

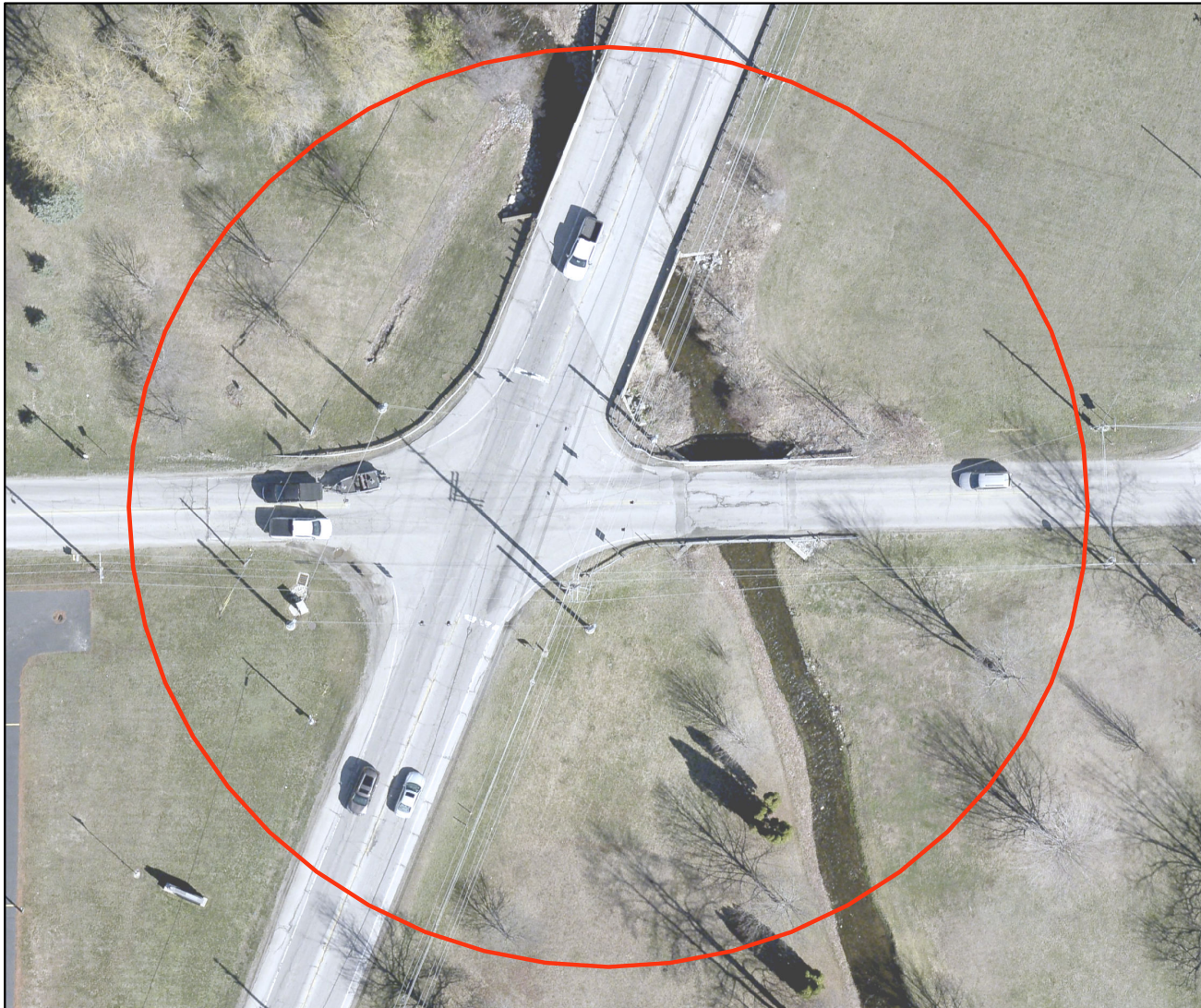


**DES #:** 1802917

**Project Location:** Bridge #161 on CR 200 S over Walnut Creek

**Sponsor:** Kosciusko County

**County:** Kosciusko



---

### Funding

Total Federal Funds: \$1,032,000

Funding Type(s): Bridge

---

### Obligation

Previous FY: \$206,560

SFY 2022: \$48,000

Total: \$254,560

---

### Unobligated Balance

Total Unobligated: \$777,440



DES #: 1802784

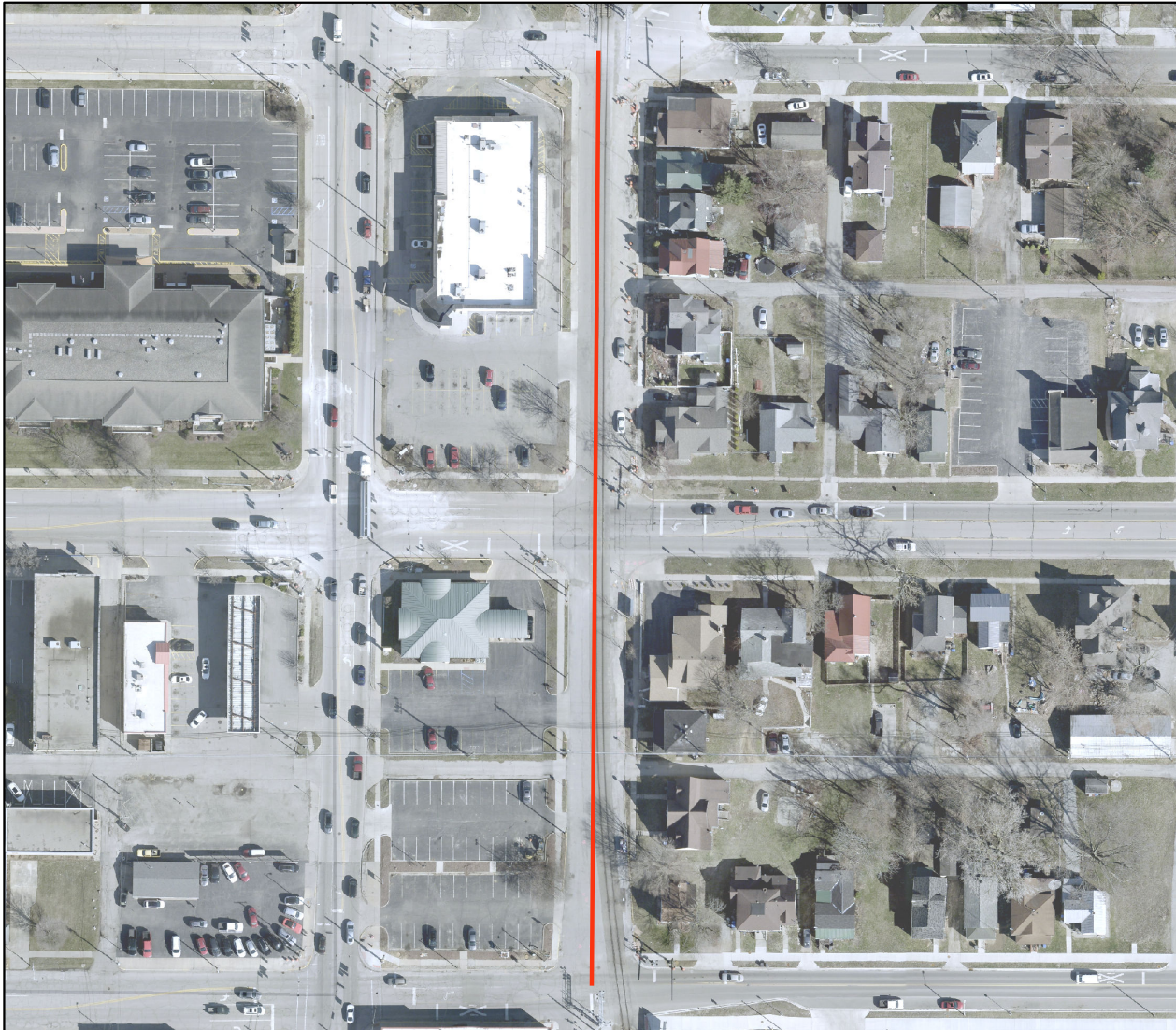
Project Location: Hickory St from Market St to Main St

Sponsor: Warsaw

County: Kosciusko



Safety



---

### Funding

Total Federal Funds: \$674,400

Funding Type(s): HSIP

---

### Obligation

Previous FY: \$646,529

SFY 2022: \$29,118

Total: \$675,647

---

### Unobligated Balance

Total Unobligated: \$-

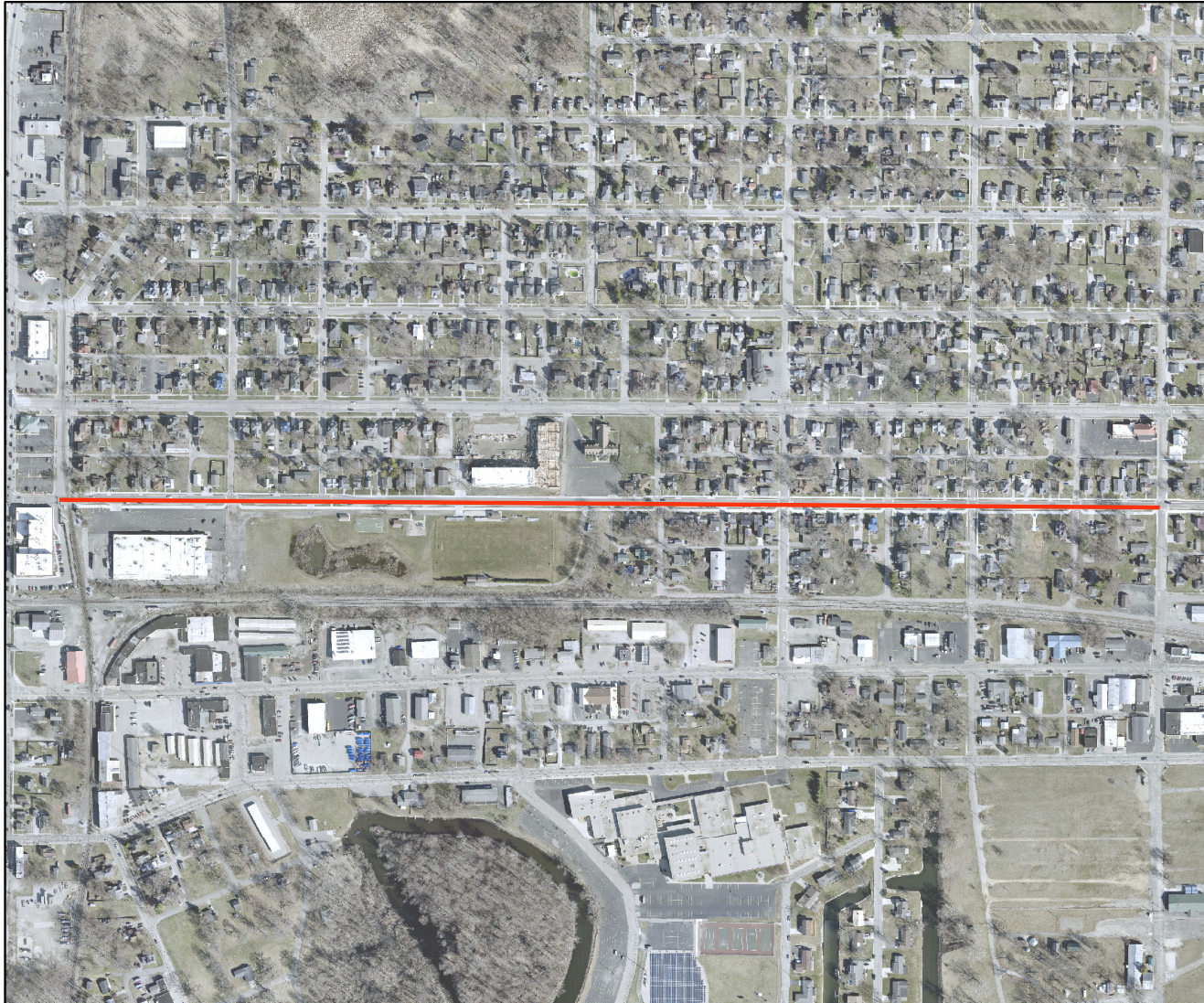


**DES #:** 1400786

**Project Location:** E Market St from Hickory to Bronson St

**Sponsor:** Warsaw

**County:** Kosciusko



---

### Funding

Total Federal Funds: \$1,773,685

Funding Type(s): STBG Grp III

---

### Obligation

Previous FY: \$1,769,440

SFY 2022: \$4,245

Total: \$1,773,685

---

### Unobligated Balance

Total Unobligated: \$-



DES #: 1600788

Project Location: Intersection of Argonne Rd, Winona Ave, Kings Highway and Park Ave

Sponsor: Winona Lake

County: Kosciusko



---

### Funding

Total Federal Funds: \$3,068,738

Funding Type(s): STBG Grp IV

---

### Obligation

Previous FY: \$527,986

SFY 2022: \$2,540,753

Total: \$3,068,739

---

### Unobligated Balance

Total Unobligated: \$-



**DES #:** 1702866

**Project Location:** Bridge #227 - S Hand St over Walnut Creek

**Sponsor:** Kosciusko County

**County:** Kosciusko



**BRIDGE**



---

### **Funding**

Total Federal Funds: \$1,550,479

Funding Type(s): Bridge

---

### **Obligation**

Previous FY: \$180,178

SFY 2022: \$48,000

Total: \$228,178

---

### **Unobligated Balance**

Total Unobligated: \$1,322,302





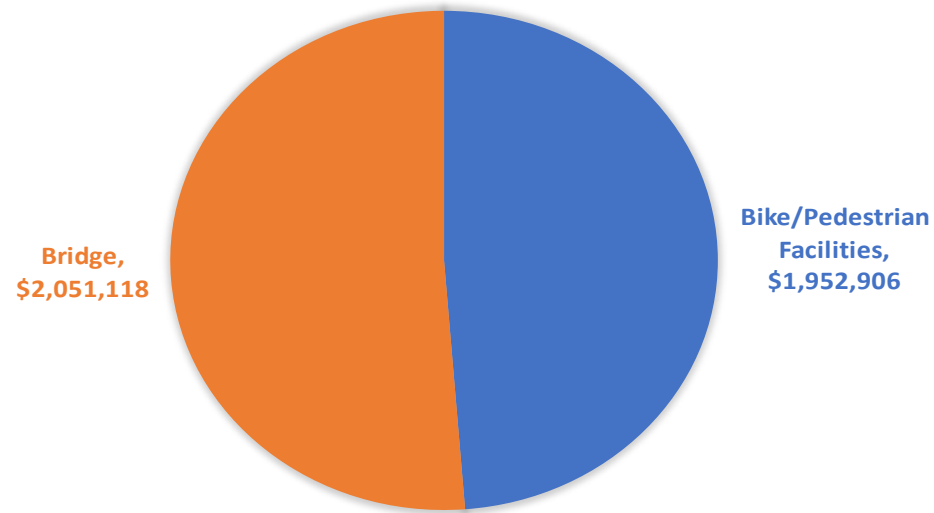
MARSHALL COUNTY



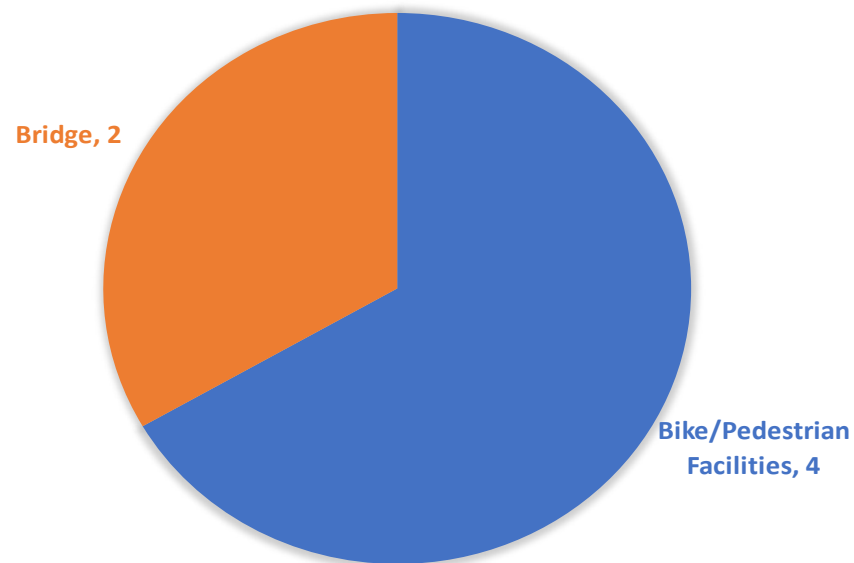
**Local Public Agency (LPA) Obligated Projects  
State Fiscal Year 2022**

| DES #   | Project Description / Location  | Sponsor         | County   | Project Type               | Funding Type | Federally Programmed | Previously Obligated | SFY 2022 Obligated | Total Obligation | Unobligated Balance |
|---------|---|-----------------|----------|----------------------------|--------------|----------------------|----------------------|--------------------|------------------|---------------------|
| 1592161 | Countywide Bridge Inspection and Inventory Program for Cycle Years 2018-2021                              | Marshall County | Marshall | Bridge                     | STBG Grp IV  | \$ 247,765           | \$ 315,899           | \$ 7,675           | \$ 323,574       | \$ -                |
| 1600931 | Bridge No. 73 carrying King Rd over the Yellow River  | Marshall County | Marshall | Bridge                     | Bridge       | \$ 2,341,223         | \$ 297,780           | \$ 2,043,443       | \$ 2,341,223     | \$ -                |
| 2101300 | Sidewalks in various locations in Town of Bourbon   | Bourbon         | Marshall | Bike/Pedestrian Facilities | TA           | \$ 399,440           | \$ -                 | \$ 99,440          | \$ 99,440        | \$ 300,000          |
| 1801120 | Lake Max Trail Phase 2 - Culver Park to W. Shore Drive  | Culver          | Marshall | Bike/Pedestrian Facilities | TA           | \$ 1,117,355         | \$ 243,955           | \$ 858,605         | \$ 1,102,560     | \$ 14,795           |
| 1702837 | East LaPorte Street Footbridge over the Yellow River  | Plymouth        | Marshall | Bike/Pedestrian Facilities | TA           | \$ 1,350,890         | \$ 309,720           | \$ 902,966         | \$ 1,212,686     | \$ 138,204          |
| 2101317 | Greenways Trail, Phase III (North in River Square Park to Pedestrian Bridge across from River Gate South) | Plymouth        | Marshall | Bike/Pedestrian Facilities | TA           | \$ 303,895           | \$ -                 | \$ 91,895          | \$ 91,895        | \$ 212,000          |

**FIGURE 12: MARSHALL COUNTY - OBLIGATIONS BY PROJECT TYPE**



**FIGURE 13: MARSHALL COUNTY - COUNT OF PROJECTS BY PROJECT TYPE**



**DES #:** 1592161

**Project Location:** Countywide Bridge Inspection and Inventory Program for Cycle Years 2018-2021

**Sponsor:** Marshall County

**County:** Marshall



---

### Funding

Total Federal Funds: \$247,765

Funding Type(s): STBG Grp IV

---

### Obligation

Previous FY: \$315,899

SFY 2022: \$7,675

Total: \$323,574

---

### Unobligated Balance

Total Unobligated: \$-



**DES #:** 1600931

**Project Location:** Bridge No. 73 carrying King Rd over the Yellow River

**Sponsor:** Marshall County

**County:** Marshall



---

### Funding

Total Federal Funds: \$2,341,223

Funding Type(s): Bridge

---

### Obligation

Previous FY: \$297,780

SFY 2022: \$2,043,443

Total: \$2,341,223

---

### Unobligated Balance

Total Unobligated: \$-



**DES #:** 2101300

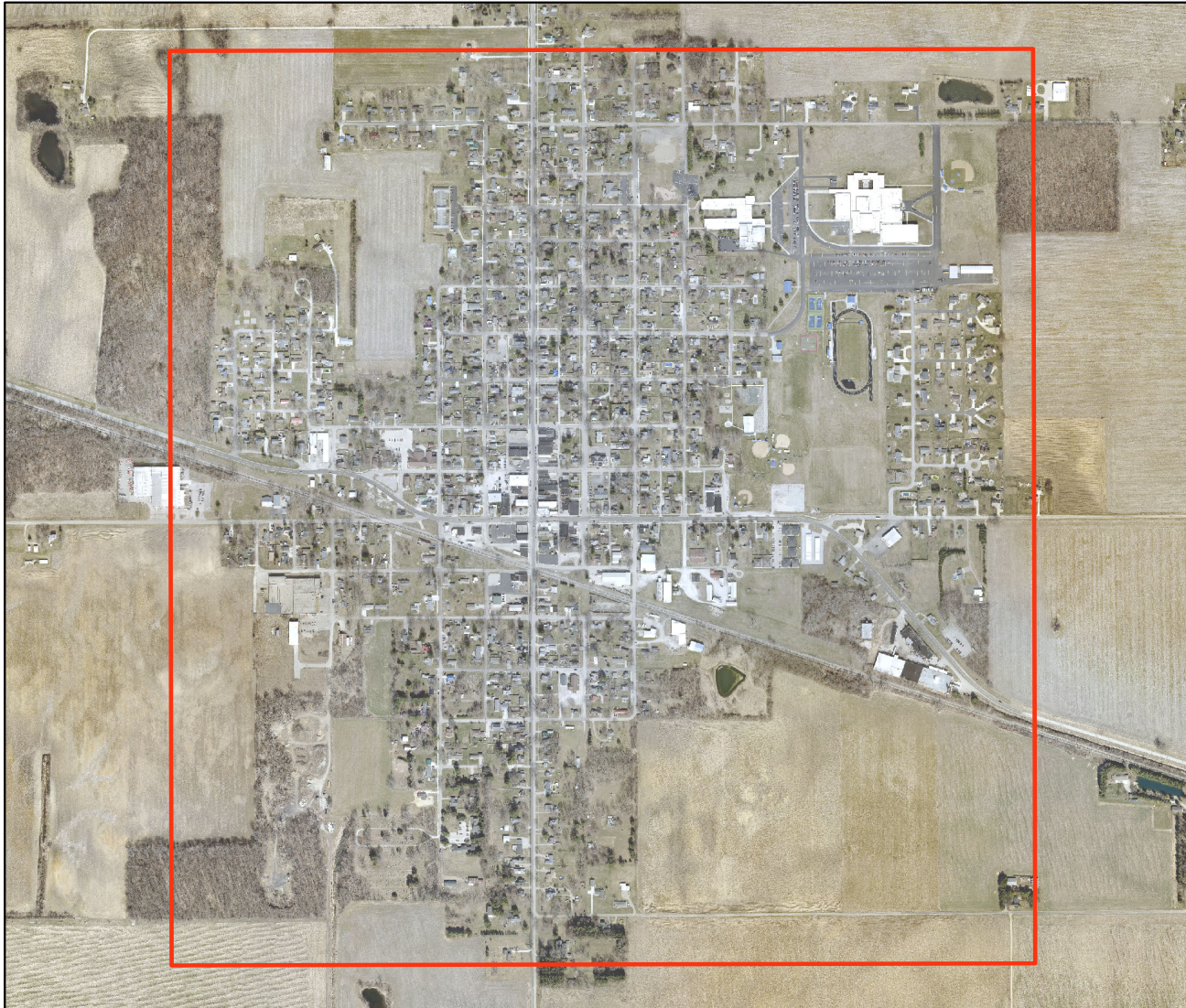
**Project Location:** Sidewalks in various locations within the Town of Bourbon

**Sponsor:** Bourbon

**County:** Marshall



**BIKE & PEDESTRIAN**



---

### **Funding**

Total Federal Funds: \$399,440

Funding Type(s): TA

---

### **Obligation**

Previous FY: \$-

SFY 2022: \$99,440

Total: \$99,440

---

### **Unobligated Balance**

Total Unobligated: \$300,000



DES #: 1801120

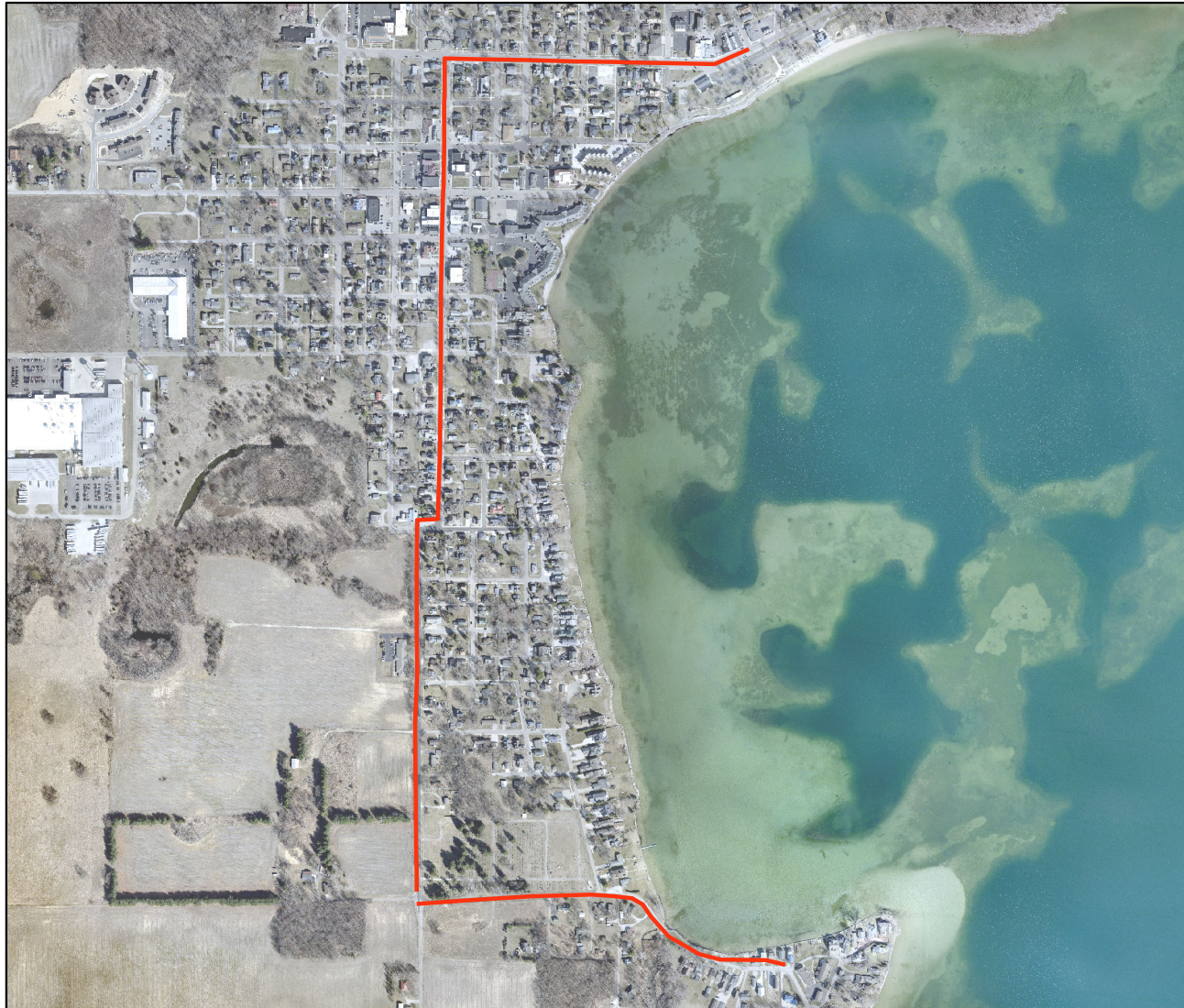
Project Location: Lake Max Trail Phase 2 - Culver Park to W Shore Drive

Sponsor: Culver

County: Marshall



BIKE & PEDESTRIAN



---

### Funding

Total Federal Funds: \$1,117,355

Funding Type(s): TA

---

### Obligation

Previous FY: \$243,955

SFY 2022: \$858,605

Total: \$1,102,560

---

### Unobligated Balance

Total Unobligated: \$14,795



**DES #:** 1702837

**Project Location:** East LaPorte Street Footbridge over the Yellow River

**Sponsor:** Plymouth

**County:** Marshall



---

**Funding**

Total Federal Funds: \$1,350,890

Funding Type(s): TA

---

**Obligation**

Previous FY: \$309,720

SFY 2022: \$902,966

Total: \$1,212,686

---

**Unobligated Balance**

Total Unobligated: \$138,204

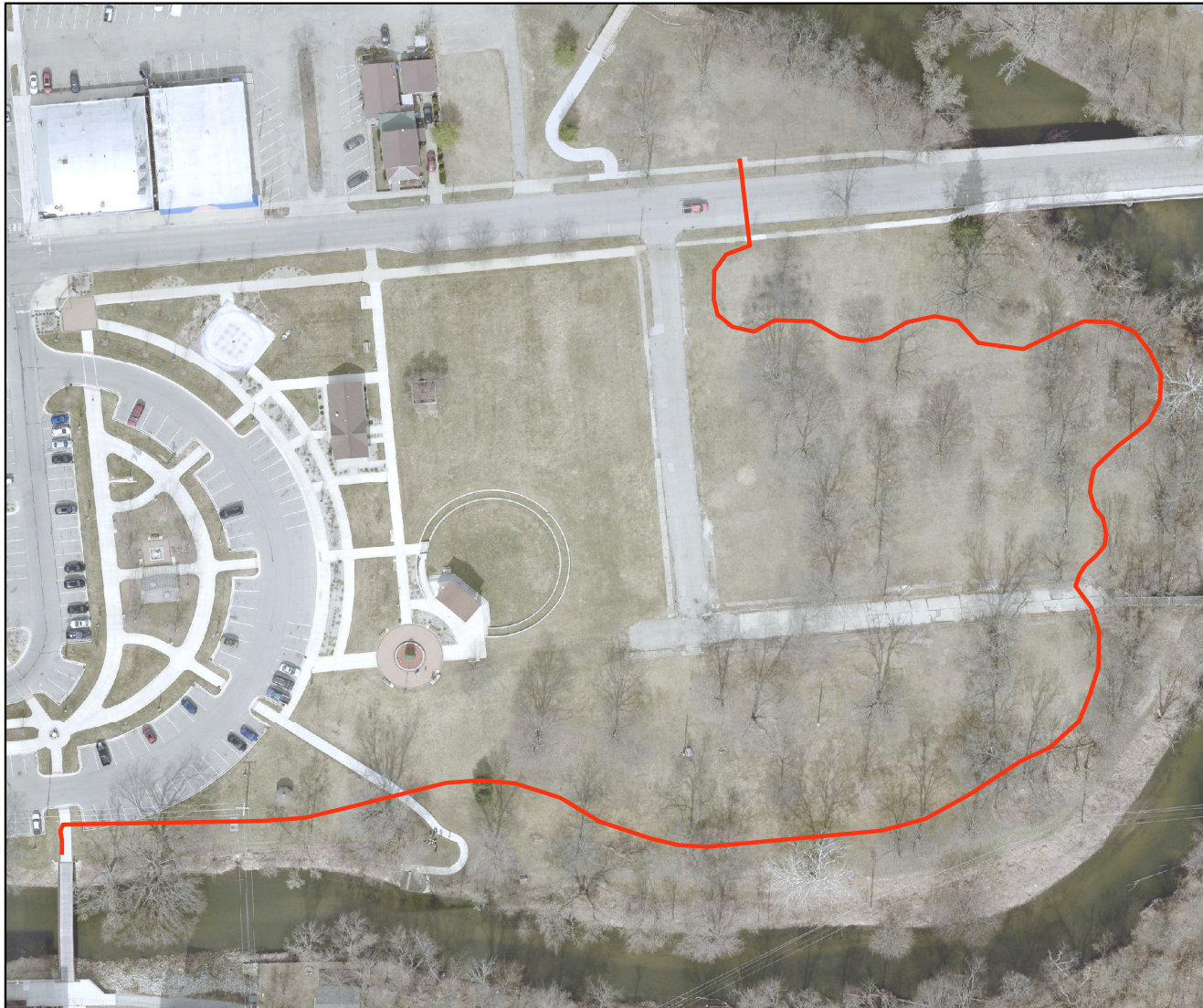


DES #: 2101317

Project Location: Greenways Trail Phase III - North in River Square Park to pedestrian bridge across from River Gate South

Sponsor: Plymouth

County: Marshall



---

### Funding

Total Federal Funds: \$303,895

Funding Type(s): TA

---

### Obligation

Previous FY: \$-

SFY 2022: \$91,895

Total: \$91,895

---

### Unobligated Balance

Total Unobligated: \$212,000



ST. JOSEPH COUNTY



**Local Public Agency (LPA) Obligated Projects  
State Fiscal Year 2022**

| DES #   | Project Description / Location   | Sponsor           | County     | Project Type                       | Funding Type | Federally Programmed | Previously Obligated | SFY 2022 Obligated | Total Obligation | Unobligated Balance |
|---------|--|-------------------|------------|------------------------------------|--------------|----------------------|----------------------|--------------------|------------------|---------------------|
| 1400637 | Olive from S of Delaware to RR S of Tucker Drive                             | South Bend        | St. Joseph | Local Road                         | STBG Grp I   | \$ 3,638,442         | \$ 3,598,298         | \$ 276,545         | \$ 3,874,843     | \$ -                |
| 1902178 | Olive St from Indiana Ct to Tucker Dr. Phase II                              | South Bend        | St. Joseph | Local Road                         | STBG Grp I   | \$ 1,347,028         | \$ 76,000            | \$ 1,256,671       | \$ 1,332,671     | \$ 14,357           |
| 1400638 | Auten Road path from Laurel to SR 933  | St. Joseph County | St. Joseph | Bike/Pedestrian Facilities         | TA           | \$ 1,041,991         | \$ 295,206           | \$ 746,785         | \$ 1,041,991     | \$ -                |
| 1801240 | Install School Zone Flashing Beacons   | South Bend        | St. Joseph | Traffic Signals, New Or Modernized | HSIP         | \$ 1,100,196         | \$ 71,435            | \$ 1,028,761       | \$ 1,100,196     | \$ -                |
| 2100022 | Bendix Dr. from Voorde Dr. to Lathrop St                                     | South Bend        | St. Joseph | Local Road                         | STBG Grp I   | \$ 5,421,688         | \$ -                 | \$ 621,688         | \$ 621,688       | \$ 4,800,000        |
| 1401811 | Coal Line Trail Phase 2 from Riverside Dr to Angela Blvd                     | South Bend        | St. Joseph | Bike/Pedestrian Facilities         | CMAQ         | \$ 2,092,489         | \$ 996,192           | \$ 137,880         | \$ 1,134,072     | \$ 958,417          |
| 1900447 | Mussel Primary-Holy Cross School Area Sidewalk Improvements                  | South Bend        | St. Joseph | Bike/Pedestrian Facilities         | STBG Grp I   | \$ 1,452,000         | \$ -                 | \$ 150,800         | \$ 150,800       | \$ 1,301,200        |
| 2100024 | Douglas Rd at Bittersweet Rd   | St. Joseph County | St. Joseph | Intersection Improvement           | STBG Grp I   | \$ 2,984,000         | \$ -                 | \$ 312,000         | \$ 312,000       | \$ 2,672,000        |
| 2100025 | Sidewalk replacement in the Our Lady of Hungary Neighborhood                 | South Bend        | St. Joseph | Bike/Pedestrian Facilities         | TA           | \$ 832,000           | \$ -                 | \$ 95,386          | \$ 95,386        | \$ 736,614          |
| 1593056 | Countywide Bridge Inspection and Inventory Program for Cycle Years 2020-2023 | St. Joseph County | St. Joseph | Bridge                             | STBG Grp IV  | \$ 891,135           | \$ 121,372           | \$ 8,720           | \$ 130,092       | \$ 761,043          |
| 1702832 | Pierce Road from US 31 to Miami Hwy  | St. Joseph County | St. Joseph | Local Road                         | STBG Grp IV  | \$ 5,780,800         | \$ 1,075,380         | \$ 189,105         | \$ 1,264,485     | \$ 4,516,315        |

FIGURE 14: ST JOSEPH COUNTY - OBLIGATIONS BY PROJECT TYPE

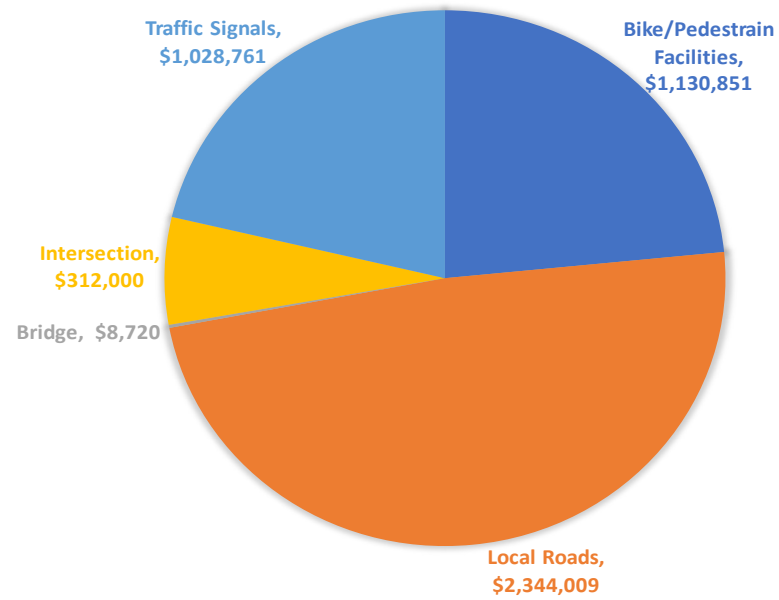
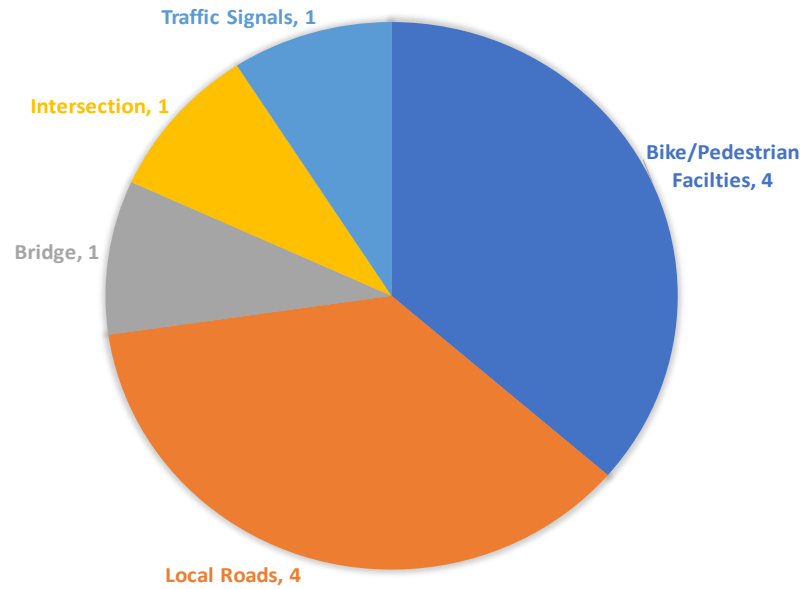


FIGURE 15: ST JOSEPH COUNTY - COUNT OF PROJECTS BY PROJECT TYPE





DES #: 1400637

Project Location: Olive from S of Delaware to RR S of Tucker Drive

Sponsor: South Bend

County: St. Joseph



---

### Funding

Total Federal Funds: \$3,638,442

Funding Type(s): STBG Grp I

---

### Obligation

Previous FY: \$3,598,298

SFY 2022: \$276,545

Total: \$3,874,843

---

### Unobligated Balance

Total Unobligated: \$-



**DES #:** 1902178

**Project Location:** Olive St from Indiana Ct to Tucker Dr. Phase II

**Sponsor:** South Bend

**County:** St. Joseph



---

### Funding

Total Federal Funds: \$1,347,028

Funding Type(s): STBG Grp I

---

### Obligation

Previous FY: \$76,000

SFY 2022: \$1,256,671

Total: \$1,332,671

---

### Unobligated Balance

Total Unobligated: \$14,357



DES #: 1400638

Project Location: Auten Road Path from Laurel to SR 933

Sponsor: St. Joseph County

County: St. Joseph



BIKE & PEDESTRIAN



---

### Funding

Total Federal Funds: \$1,041,991

Funding Type(s): TA

---

### Obligation

Previous FY: \$295,206

SFY 2022: \$746,785

Total: \$1,041,991

---

### Unobligated Balance

Total Unobligated: \$-

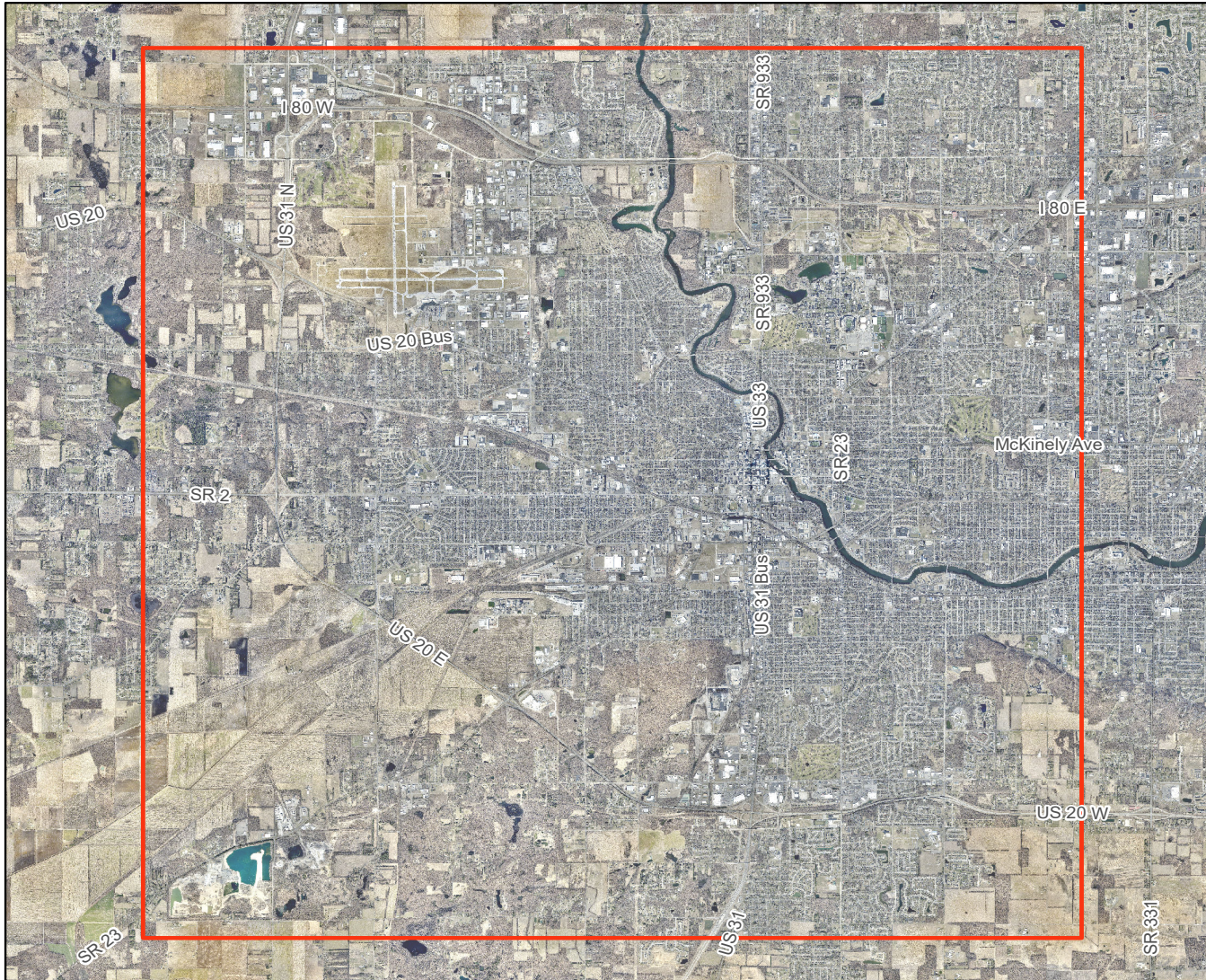


**DES #:** 1801240

**Project Location:** Install School Zone Flashing Beacons

**Sponsor:** South Bend

**County:** St. Joseph



---

### Funding

Total Federal Funds: \$1,100,196

Funding Type(s): HSIP

---

### Obligation

Previous FY: \$71,435

SFY 2022: \$1,028,761

Total: \$1,100,196

---

### Unobligated Balance

Total Unobligated: \$-



DES #: 2100022

Project Location: Bendix Dr from Voorde Dr to Lathrop St

Sponsor: South Bend

County: St. Joseph



---

### Funding

Total Federal Funds: \$5,421,688

Funding Type(s): STBG Grp I

---

### Obligation

Previous FY: \$-

SFY 2022: \$621,688

Total: \$621,688

---

### Unobligated Balance

Total Unobligated: \$4,800,000



DES #: 1900447

Project Location: Mussel Primary-Holy Cross School Area Sidewalk Improvements

Sponsor: South Bend

County: St. Joseph



BIKE & PEDESTRIAN



---

### Funding

Total Federal Funds: \$1,452,000

Funding Type(s): STBG Grp I

---

### Obligation

Previous FY: \$-

SFY 2022: \$150,800

Total: \$150,800

---

### Unobligated Balance

Total Unobligated: \$1,301,200



**DES #:** 2100024

**Project Location:** Douglas Rd at Bittersweet Rd

**Sponsor:** St. Joseph County

**County:** St. Joseph



---

### Funding

Total Federal Funds: \$2,984,000

Funding Type(s): STBG Grp I

---

### Obligation

Previous FY: \$-

SFY 2022: \$312,000

Total: \$312,000

---

### Unobligated Balance

Total Unobligated: \$2,672,000



DES #: 2100025

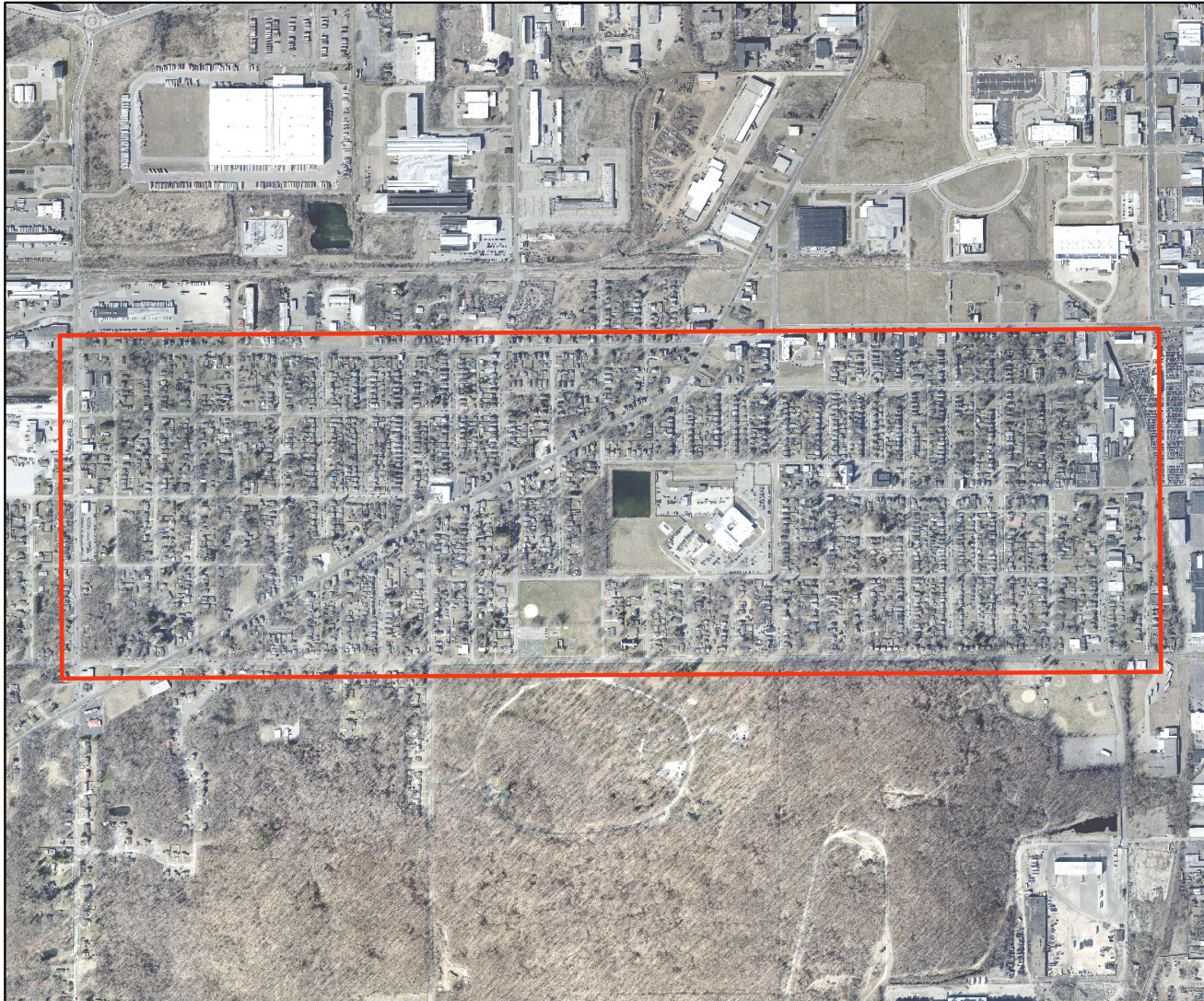
Project Location: Sidewalk Replacement in the Our Lady of Hungary Neighborhood

Sponsor: South Bend

County: St. Joseph



BIKE & PEDESTRIAN



---

### Funding

Total Federal Funds: \$832,000

Funding Type(s): TA

---

### Obligation

Previous FY: \$-

SFY 2022: \$95,386

Total: \$95,386

---

### Unobligated Balance

Total Unobligated: \$736,614

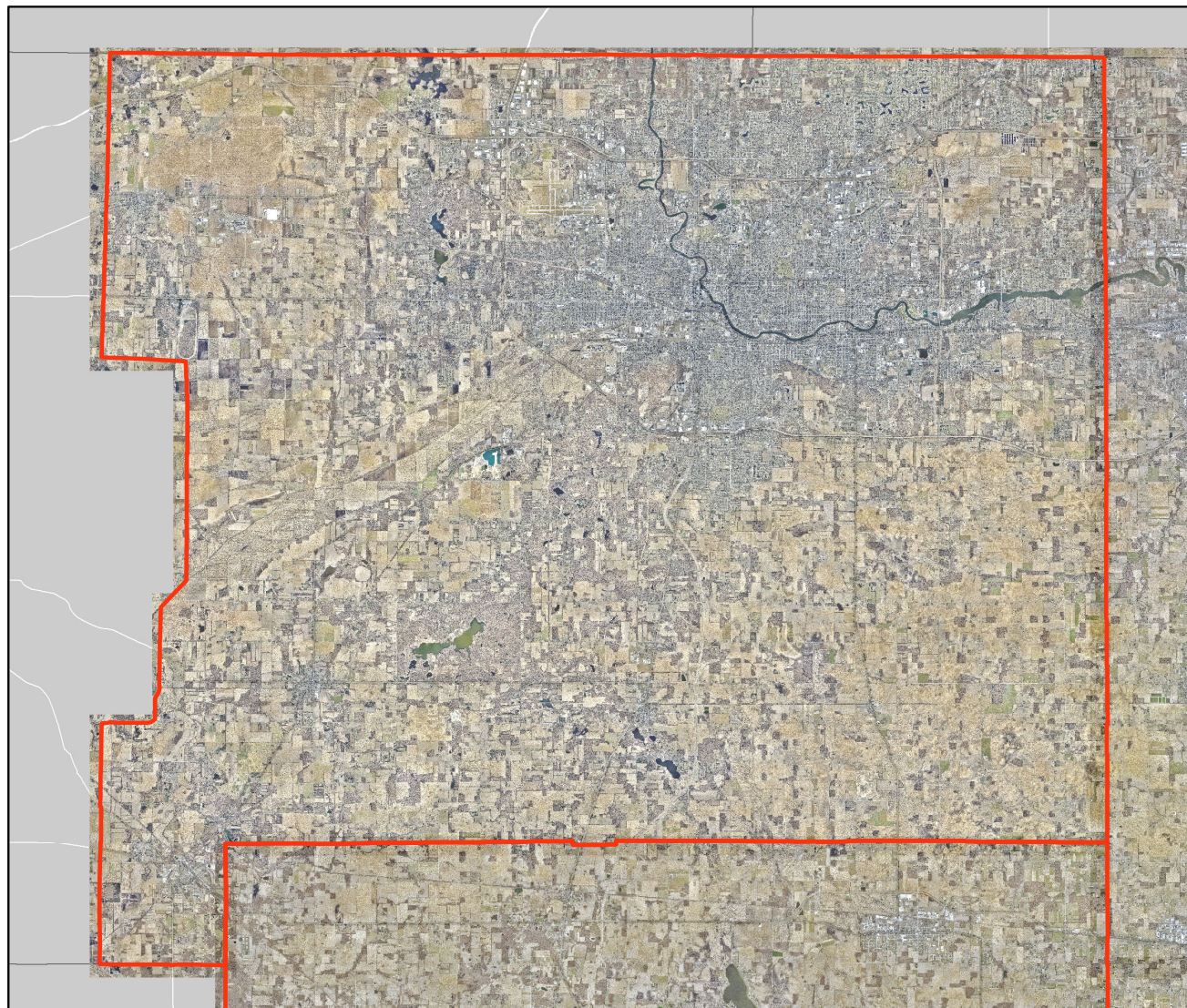


**DES #:** 1593056

**Project Location:** Countywide Bridge Inspection and Inventory Program for Cycle Years 2020-2023

**Sponsor:** St. Joseph County

**County:** St. Joseph



---

### Funding

Total Federal Funds: \$891,135

Funding Type(s): STBG Grp IV

---

### Obligation

Previous FY: \$121,372

SFY 2022: \$8,720

Total: \$130,092

---

### Unobligated Balance

Total Unobligated: \$761,043



**DES #:** 1702832

**Project Location:** Pierce Road from US 31 to Miami Hwy

**Sponsor:** St. Joseph County

**County:** St. Joseph



---

### Funding

Total Federal Funds: \$5,780,800

Funding Type(s): STBG Grp IV

---

### Obligation

Previous FY: \$1,075,380

SFY 2022: \$189,105

Total: \$1,264,485

---

### Unobligated Balance

Total Unobligated: \$4,516,315



# APPENDICES

**Appendix A:** Below find the project type icon and category of work represented in each project profile page.

|   |                                      |                         |
|---|--------------------------------------|-------------------------|
|    | <b>Local Road</b>                    |                         |
|   | Added Travel Lanes                   | Surface Treatment       |
|   | New Road Construction                |                         |
|   | Road Reconstruction                  |                         |
|    | <b>Bridge</b>                        |                         |
|   | Bridge Rehabilitation                | New Bridge Construction |
|   | Bridge Replacement                   | Bridge Inspection       |
|   | Bridge Maintenance                   |                         |
|    | <b>Intersection</b>                  |                         |
|   | Intersection Improvement             |                         |
|   | Roundabouts                          |                         |
|   | <b>Safety</b>                        |                         |
|   | Local Safety Projects                | Railroad Grade Crossing |
|   | Sign Replacement                     |                         |
|   | Traffic Calming                      |                         |
|  | <b>Bike &amp; Pedestrian</b>         |                         |
|   | Bike/Pedestrian Facilities           |                         |
|   | Sidewalks and ADA                    |                         |
|   | Safe Routes to School                |                         |
|  | <b>Traffic Control &amp; Signals</b> |                         |
|   | Signal Installation                  | Lighting Maintenance    |
|   | Sign Installation                    |                         |
|   | Pavement Markings                    |                         |

**Appendix B:** Funding sources referenced in the SFY 2022 Annual List of Obligated Projects.

**Surface Transportation Block Group Program (STBG)**  
 The Surface Transportation Block Group Program (STBG) is the primary funding source for transportation projects. It is separated into several categories: Group I, Group II, Group III, Group IV, and State.

**Group I** – This is designated for use for urbanized areas with populations of at least 200,000. In the Michiana region, it is available for the South Bend Urbanized Area.

**Group II** – This is designated for use for urbanized areas with populations greater than or equal to 50,000 but less than 200,000. In the Michiana region, it is available to the Elkhart/Goshen Urbanized Area.

**Group III** – Is available for use in cities and towns greater or equal to 5,000 but less than 50,000. In the Michiana region, it is available to Nappanee, Plymouth, and Warsaw.

**Group IV** – is available for use in towns in rural areas that have populations under 5,000 and non-urbanized portions of counties.

#### Transportation Alternative Program (TAP)

Transportation Alternative Program (TAP) provides funding for programs and projects defined as transportation alternatives. TAP projects could include bicycle and pedestrian facilities, improving access to public transportation, community improvement activities, safe routes to school sidewalk projects, and projects for constructing roadways largely in the right-of-way of former Interstate System routes or other divided highways.

#### Congestion Mitigation Air Quality (CMAQ)

Congestion Mitigation Air Quality (CMAQ) provides flexible funding for transportation projects. Funding is available to reduce congestion and improve air quality for areas that do not meet NAAQS for ozone, carbon monoxide, or particulate matter (non-attainment) as well as for areas that were once out of compliance but now meet the standard (maintenance).

#### Bridge Funds

Bridge funds are available to all counties for bridge rehabilitations, replacements, and systematic preventative maintenance. Local public agency (LPA) must be in compliance with National Bridge Inspection Standards. To be eligible for bridge funding, a bridge must meet four (4) criteria: 1) it must be on NBI database 2) sufficiency rating of 80 or less 3) classified as structurally deficient or functionally obsolete 4) cannot have been rehabilitated or reconstructed in the last ten (10) years.

#### Highway Safety Improvement Program (HSIP)

The goal of the program is to achieve a significant reduction in traffic fatalities and injuries on all public roads. HSIP requires data driven and a strategic approach to improving road safety that focuses on performance.

#### Section 130

The goal of the Section 130 Program is to reduce highway rail crossing collisions. Section 130 funds are typically used to install train-activated warning bells, flashing lights, overhead cantilevers, gates, and constant warning time circuitry at highway rail crossings on the state and local highway system.



**Appendix C:** A complete listing of SFY 2022 obligations broken down by sponsor type.

**Local Public Agency (LPA) Obligated Projects  
State Fiscal Year 2022**

| DES #   | Project Description / Location   | Sponsor                  | County    | Project Type               | Funding Type | Federally Programmed | Previously Obligated | SFY 2022 Obligated | Total Obligation | Unobligated Balance |
|---------|--|--------------------------|-----------|----------------------------|--------------|----------------------|----------------------|--------------------|------------------|---------------------|
| 1700309 | Bridge 152 on Mishawaka Rd over Yellow River                                 | Elkhart County           | Elkhart   | Bridge                     | STBG Grp IV  | \$ 2,990,338         | \$ 412,556           | \$ 2,577,782       | \$ 2,990,338     | \$ -                |
| 1400715 | Wilden Ave: Rock Run Creek to 6th St   | Goshen                   | Elkhart   | Local Road                 | STBG Grp II  | \$ 7,073,332         | \$ 1,043,478         | \$ 6,029,854       | \$ 7,073,332     | \$ -                |
| 2100021 | College Ave from 9th St to US 33   | Goshen                   | Elkhart   | Local Road                 | STBG Grp II  | \$ 7,633,160         | \$ -                 | \$ 693,160         | \$ 693,160       | \$ 6,940,000        |
| 1801265 | Beaver Lane at NS RR DOT #510019A  | Goshen                   | Elkhart   | Safety                     | Section 130  | \$ 703,863           | \$ 36,000            | \$ 703,863         | \$ 739,863       | \$ -                |
| 1900391 | Madison St at NS RR DOT #510039L   | Goshen                   | Elkhart   | Safety                     | Section 130  | \$ 445,390           | \$ 18,000            | \$ 425,390         | \$ 443,390       | \$ 2,000            |
| 2003071 | Bridge #233 on CR 36 over Yellow Creek                                       | Elkhart County           | Elkhart   | Bridge                     | Bridge       | \$ 1,274,957         | \$ -                 | \$ 224,760         | \$ 224,760       | \$ 1,050,197        |
| 2101279 | Apple Rd in Osceola DOT #522517T & CR 29 in New Paris DOT #533516S           | Norfolk Southern Railway | Elkhart   | Safety                     | Section 130  | \$ 830,623           | \$ -                 | \$ 830,623         | \$ 830,623       | \$ -                |
| 1802917 | Bridge No 161 on CR200S over Walnut Creek                                    | Kosciusko County         | Kosciusko | Bridge                     | Bridge       | \$ 1,032,000         | \$ 206,560           | \$ 48,000          | \$ 254,560       | \$ 777,440          |
| 1802784 | Hickory St from Market St to Main St   | Warsaw                   | Kosciusko | Safety                     | HSIP         | \$ 674,400           | \$ 646,529           | \$ 29,118          | \$ 675,647       | \$ -                |
| 1400786 | E Market St from Hickory to Bronson St                                       | Warsaw                   | Kosciusko | Local Road                 | STBG Grp III | \$ 1,773,685         | \$ 1,769,440         | \$ 4,245           | \$ 1,773,685     | \$ -                |
| 1600788 | Intersection of Argonne Rd, Winona Ave, Kings Hwy and Park Ave               | Winona Lake              | Kosciusko | Intersection Improvement   | STBG Grp IV  | \$ 3,068,738         | \$ 527,986           | \$ 2,540,753       | \$ 3,068,739     | \$ -                |
| 1702866 | Bridge #227 on S Hand Street over Walnut Creek                               | Kosciusko County         | Kosciusko | Bridge                     | Bridge       | \$ 1,550,479         | \$ 180,178           | \$ 48,000          | \$ 228,178       | \$ 1,322,302        |
| 1592161 | Countywide Bridge Inspection and Inventory Program for Cycle Years 2018-2021 | Marshall County          | Marshall  | Bridge                     | STBG Grp IV  | \$ 247,765           | \$ 315,899           | \$ 7,675           | \$ 323,574       | \$ -                |
| 1600931 | Bridge No. 73 carrying King Rd over the Yellow River                         | Marshall County          | Marshall  | Bridge                     | Bridge       | \$ 2,341,223         | \$ 297,780           | \$ 2,043,443       | \$ 2,341,223     | \$ -                |
| 2101300 | Sidewalks in various locations in Town of Bourbon                            | Bourbon                  | Marshall  | Bike/Pedestrian Facilities | TA           | \$ 399,440           | \$ -                 | \$ 99,440          | \$ 99,440        | \$ 300,000          |

**Local Public Agency (LPA) Obligated Projects  
State Fiscal Year 2022**

| DES #   | Project Description / Location  | Sponsor           | County     | Project Type                       | Funding Type | Federally Programmed | Previously Obligated | SFY 2022 Obligated | Total Obligation | Unobligated Balance |
|---------|---|-------------------|------------|------------------------------------|--------------|----------------------|----------------------|--------------------|------------------|---------------------|
| 1801120 | Lake Max Trail Phase 2 - Culver Park to W. Shore Drive  | Culver            | Marshall   | Bike/Pedestrian Facilities         | TA           | \$ 1,117,355         | \$ 243,955           | \$ 858,605         | \$ 1,102,560     | \$ 14,795           |
| 1702837 | East LaPorte Street Footbridge over the Yellow River  | Plymouth          | Marshall   | Bike/Pedestrian Facilities         | TA           | \$ 1,350,890         | \$ 309,720           | \$ 902,966         | \$ 1,212,686     | \$ 138,204          |
| 2101317 | Greenways Trail, Phase III (North in River Square Park to Pedestrian Bridge across from River Gate South) | Plymouth          | Marshall   | Bike/Pedestrian Facilities         | TA           | \$ 303,895           | \$ -                 | \$ 91,895          | \$ 91,895        | \$ 212,000          |
| 1400637 | Olive from S of Delaware to RR S of Tucker Drive  | South Bend        | St. Joseph | Local Road                         | STBG Grp I   | \$ 3,638,442         | \$ 3,598,298         | \$ 276,545         | \$ 3,874,843     | \$ -                |
| 1902178 | Olive St from Indiana Ct to Tucker Dr. Phase II   | South Bend        | St. Joseph | Local Road                         | STBG Grp I   | \$ 1,347,028         | \$ 76,000            | \$ 1,256,671       | \$ 1,332,671     | \$ 14,357           |
| 1400638 | Auten Road path from Laurel to SR 933   | St. Joseph County | St. Joseph | Bike/Pedestrian Facilities         | TA           | \$ 1,041,991         | \$ 295,206           | \$ 746,785         | \$ 1,041,991     | \$ -                |
| 1801240 | Install School Zone Flashing Beacons  | South Bend        | St. Joseph | Traffic Signals, New Or Modernized | HSIP         | \$ 1,100,196         | \$ 71,435            | \$ 1,028,761       | \$ 1,100,196     | \$ -                |
| 2100022 | Bendix Dr. from Voorde Dr. to Lathrop St  | South Bend        | St. Joseph | Local Road                         | STBG Grp I   | \$ 5,421,688         | \$ -                 | \$ 621,688         | \$ 621,688       | \$ 4,800,000        |
| 1401811 | Coal Line Trail Phase 2 from Riverside Dr to Angela Blvd  | South Bend        | St. Joseph | Bike/Pedestrian Facilities         | CMAQ         | \$ 2,092,489         | \$ 996,192           | \$ 137,880         | \$ 1,134,072     | \$ 958,417          |
| 1900447 | Mussel Primary-Holy Cross School Area Sidewalk Improvements   | South Bend        | St. Joseph | Bike/Pedestrian Facilities         | STBG Grp I   | \$ 1,452,000         | \$ -                 | \$ 150,800         | \$ 150,800       | \$ 1,301,200        |
| 2100024 | Douglas Rd at Bittersweet Rd  | St. Joseph County | St. Joseph | Intersection Improvement           | STBG Grp I   | \$ 2,984,000         | \$ -                 | \$ 312,000         | \$ 312,000       | \$ 2,672,000        |
| 2100025 | Sidewalk replacement in the Our Lady of Hungary Neighborhood  | South Bend        | St. Joseph | Bike/Pedestrian Facilities         | TA           | \$ 832,000           | \$ -                 | \$ 95,386          | \$ 95,386        | \$ 736,614          |
| 1593056 | Countywide Bridge Inspection and Inventory Program for Cycle Years 2020-2023                              | St. Joseph County | St. Joseph | Bridge                             | STBG Grp IV  | \$ 891,135           | \$ 121,372           | \$ 8,720           | \$ 130,092       | \$ 761,043          |
| 1702832 | Pierce Road from US 31 to Miami Hwy   | St. Joseph County | St. Joseph | Local Road                         | STBG Grp IV  | \$ 5,780,800         | \$ 1,075,380         | \$ 189,105         | \$ 1,264,485     | \$ 4,516,315        |



**INDOT Obligated Projects  
State Fiscal Year 2022**

| DES #   | Project Description / Location                          | Sponsor | County  | INDOT Project Category                 | Fund Type  | Federal Programmed | SFY 2022 Obligated | Previous Obligations | Total Obligation | Unobligated Balance |
|---------|---|---------|---------|--|------------|--------------------|--------------------|----------------------|------------------|---------------------|
| 1600223 | SR 13, Bridge over Dry Run, 1.56 miles N of US 33       | INDOT   | Elkhart | Bridge Deck Overlay                    | STBGP Flex | \$ 359,294         | \$ 11,624          | \$ 328,560           | \$ 340,184       | \$ 19,110           |
| 1600212 | SR 19, 5.89 miles N of US 20 to 2.03 miles N of I-80/90 | INDOT   | Elkhart | HMA Overlay, Preventative Maintenance  | HSIP       | \$ 2,355,880       | \$ 936             | \$ 2,150,013         | \$ 2,150,949     | \$ 204,931          |
| 2000277 | US 20, CR 3 over US 20 EB/WB, 1.14 miles W of SR 19     | INDOT   | Elkhart | Bridge Rehab, Repair or Replace Joints | NHPP       | \$ 26,668          | \$ 27,631          | \$ -                 | \$ 27,631        | \$ -                |

**Transit Obligated Projects  
State Fiscal Year 2022**

| DES #      | Project Description / Location                                   | Sponsor              | County     | Work Type   | Federal Programmed | SFY 2022 Obligated |
|------------|--|----------------------|------------|---|--------------------|--------------------|
|            | Operating Assistance (ARPA)                                      | MACOG Transit        | Elkhart    | Transit Operating                                   | \$ 790,844         | \$ 790,844         |
|            | Buy Replacement <30 ft Bus ( Section 5310)                       | MACOG Transit        | Elkhart    | Transit Purchase Vehicle                            | \$ 491,351         | \$ 491,351         |
|            | Project Administration (Section 5310)                            | MACOG Transit        | Elkhart    | Transit Operating                                   | \$ 54,595          | \$ 54,595          |
|            | Buy Replacement Trolley Buses (CCOC)                             | MACOG Transit        | Elkhart    | Transit Purchase Vehicle                            | \$ 688,000         | \$ 688,000         |
|            | Non Fixed Route ADA Paratransit Service (CCOC)                   | MACOG Transit        | Elkhart    | Transit Operating                                   | \$ 416,374         | \$ 416,374         |
|            | Acquire ADP Software (CCOC)                                      | MACOG Transit        | Elkhart    | Transit Operating                                   | \$ 200,001         | \$ 200,001         |
|            | Capital Cost of Third Party Contracting (CCOC)                   | MACOG Transit        | Elkhart    | Transit Operating                                   | \$ 956,110         | \$ 956,110         |
| MAC-22-016 | Transit Administration & Purchase Vehicles <30 ft (Section 5310) | MPO - South Bend UZA | St. Joseph | Transit Administration/<br>Transit Vehicle Purchase | \$ 545,946         | \$ 545,946         |
| MAC-22-003 | Buy Associated Capital (Section 5307)                            | Transpo              | St. Joseph | Transit Operating                                   | \$ 250,000         | \$ 250,000         |
| MAC-22-006 | Acquire ADP Software (Section 5307)                              | Transpo              | St. Joseph | Transit Operating                                   | \$ 250,000         | \$ 250,000         |



**Transit Obligated Projects  
State Fiscal Year 2022**

| DES #      | Project Description / Location                            | Sponsor | County     | Work Type                        | Federal Programmed | SFY 2022 Obligated |
|------------|---|---------|------------|----------------------------------|--------------------|--------------------|
| MAC-22-007 | Rehab/Renovate Facilities (Section 5307)                  | Transpo | St. Joseph | Transit Operating                | \$ 300,000         | \$ 300,000         |
| MAC-22-008 | Preventative Maintenance (Section 5307)                   | Transpo | St. Joseph | Transit Preventative Maintenance | \$ 1,300,000       | \$ 1,300,000       |
| MAC-22-009 | Operating Assistance - Paratransit (Section 5307)         | Transpo | St. Joseph | Transit Operating                | \$ 500,000         | \$ 500,000         |
| MAC-22-010 | Operating Assistance - Paratransit (Section 5307)         | Transpo | St. Joseph | Transit Operating                | \$ 1,634,610       | \$ 1,634,610       |
| MAC-22-001 | Rehab/Renovate Facilities (Section 5339)                  | Transpo | St. Joseph | Transit Operating                | \$ 310,880         | \$ 310,880         |
| MAC-22-002 | Buy Replacement > 35 ft Bus (Section 5339)                | Transpo | St. Joseph | Transit Purchase Vehicle         | \$ 5,321,745       | \$ 5,321,745       |
| MAC-22-017 | Workforce Development (Section 5339)                      | Transpo | St. Joseph | Transit Operating                | \$ 87,385          | \$ 87,385          |
| MAC-22-022 | Misc Support Equipment (Section 5339)                     | Transpo | St. Joseph | Transit Operating                | \$ 25,000          | \$ 25,000          |
| MAC-22-023 | Buy Replacement > 35 ft Bus (Section 5339)                | Transpo | St. Joseph | Transit Purchase Vehicle         | \$ 200,000         | \$ 200,000         |
| MAC-22-024 | General Development/Comprehensive Planning (Section 5339) | Transpo | St. Joseph | Transit Planning                 | \$ 300,000         | \$ 300,000         |

\*For Federal Transit Administration (FTA) projects, obligation occurs when the FTA grant is awarded. All unobligated balances for these projects are zero.

**MACOG Obligated Projects  
State Fiscal Year 2022**

| DES #   | Project Description / Location         | Sponsor                                   | County              | Project Type | Funding Type | Federal Programmed | Previously Obligated (Prior to SFY 2020) | SFY 2022 Obligated | Total Obligation | Unobligated Balance |
|---------|--|---|---------------------|--------------|--------------|--------------------|--|--------------------|------------------|---------------------|
| 2001101 | Clean Air Campaign - 2022              | MPO - South Bend & Elkhart/<br>Goshen UZA | St Joseph & Elkhart | UPWP         | CMAQ         | \$ 100,000         | \$ -                                     | \$ 100,000         | \$ 100,000       | \$ -                |
| 2001101 | Pictometry                             | MPO - Elkhart/<br>Goshen UZA              | Elkhart             | UPWP         | STBG         | \$ 523,751         | \$ -                                     | \$ 523,751         | \$ 523,751       | \$ -                |
| 2001101 | Regional Freight Plan                  | MPO - South Bend UZA                      | St Joseph           | UPWP         | STBG         | \$ 100,000         | \$ -                                     | \$ 100,000         | \$ 100,000       | \$ -                |
| 2001101 | CR 52/CR 101 near Nappanee - PEL Study | MPO - Elkhart/<br>Goshen UZA              | Elkhart             | UPWP         | STBG         | \$ 60,000          | \$ -                                     | \$ 60,000          | \$ 60,000        | \$ -                |
| 2001101 | Potato Creek Trail - PEL Study         | MPO - South Bend UZA                      | St Joseph           | UPWP         | STBG         | \$ 60,000          | \$ -                                     | \$ 60,000          | \$ 60,000        | \$ -                |



This Document was prepared by:



227 W. Jefferson Blvd.  
11th Floor County-City Bldg.  
South Bend, IN 46601

p: 574.287.1829 | f: 574.239.4072