

North Central Indiana Air Quality and GOEVIN Charging Infrastructure Update



Shawn Seals

Senior Environmental Manager

Office of Air Quality

Indiana Department of

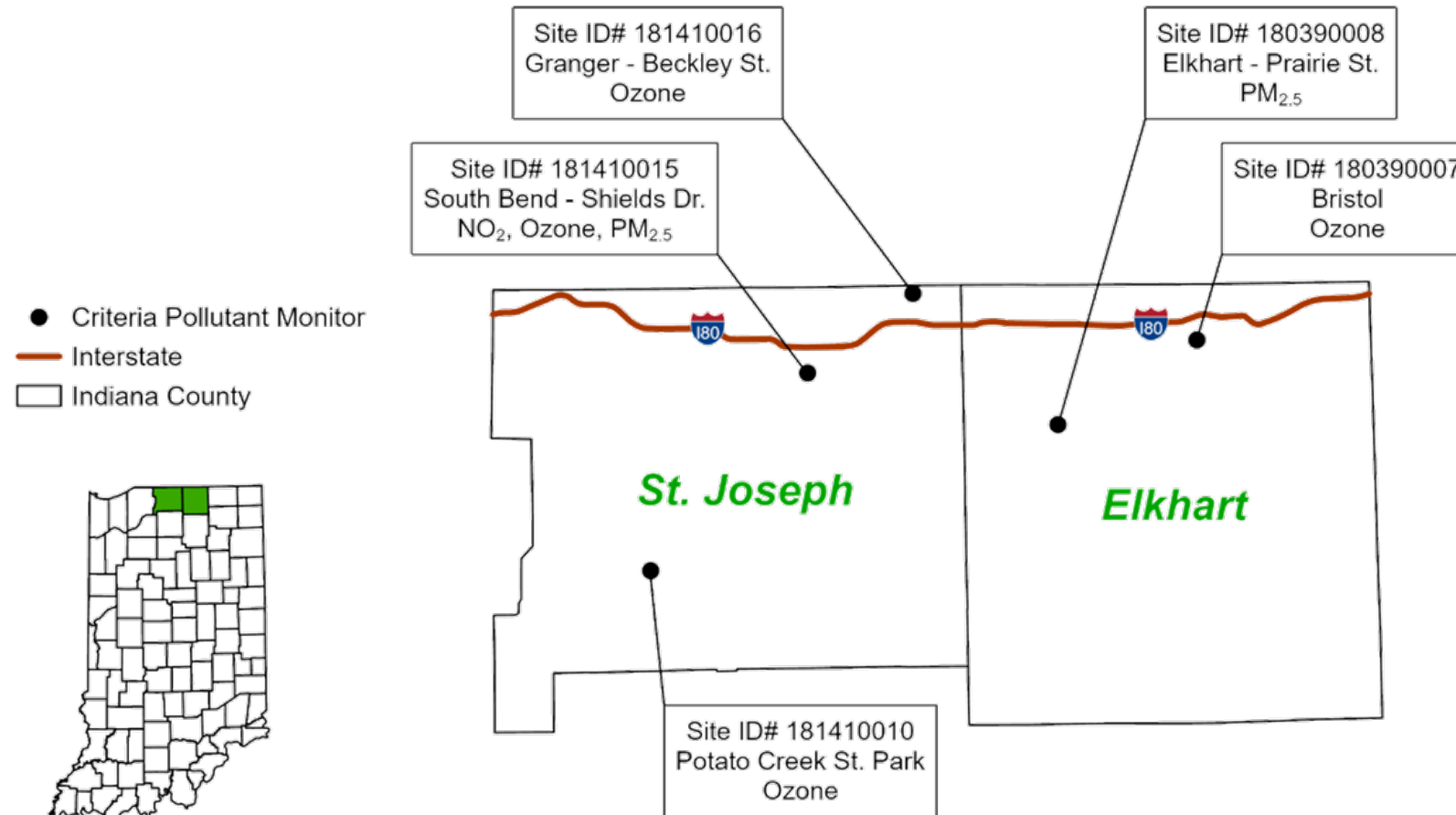
Environmental Management

April 16, 2025

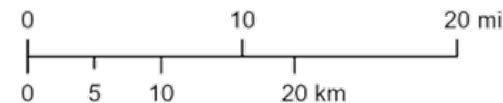
Presentation Summary

- Geographic area
- Long-term air quality trends
- Long-term emission trends
- Current schedule for ongoing National Ambient Air Quality Standards (NAAQS) review
- GOEVIN Funding Opportunity

Geographic Area



Criteria Pollutant Monitors for *Elkhart* and *St. Joseph* Counties

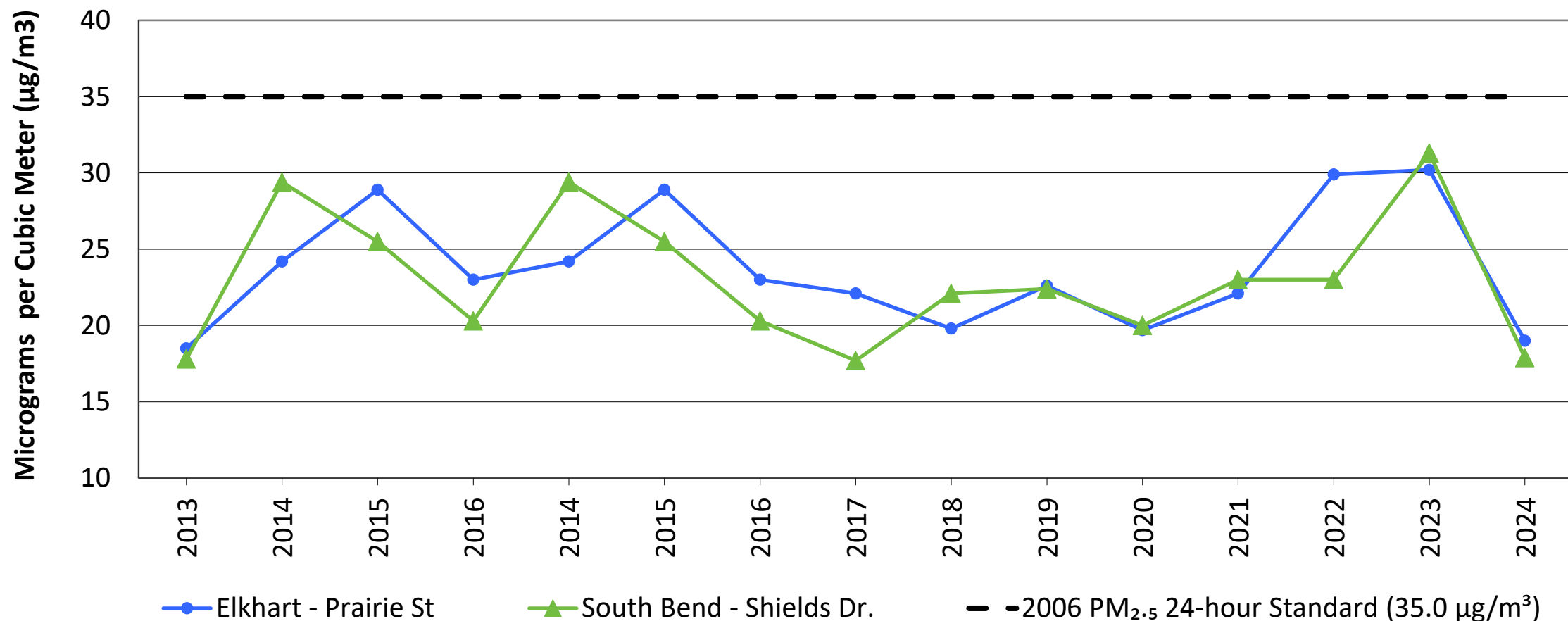


Date: 3/27/2025
 Mapped By: C. Mitchell, OAQ
 Sources: Office of Air Quality
 Map Projection: UTM Zone 16 N
 Map Datum: NAD83

Long-Term Air Quality Trends

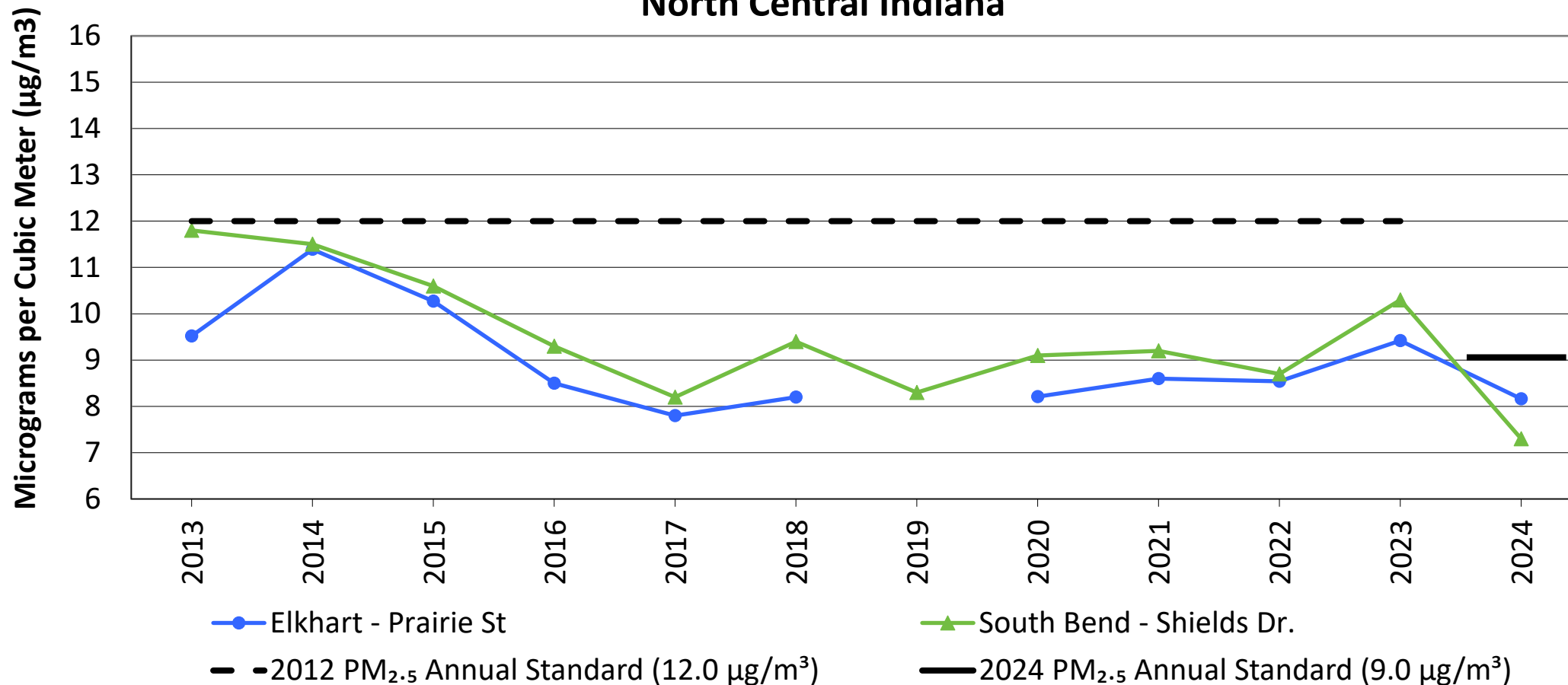
PM_{2.5}

PM_{2.5} 98th Percentile Values Trend Chart North Central Indiana



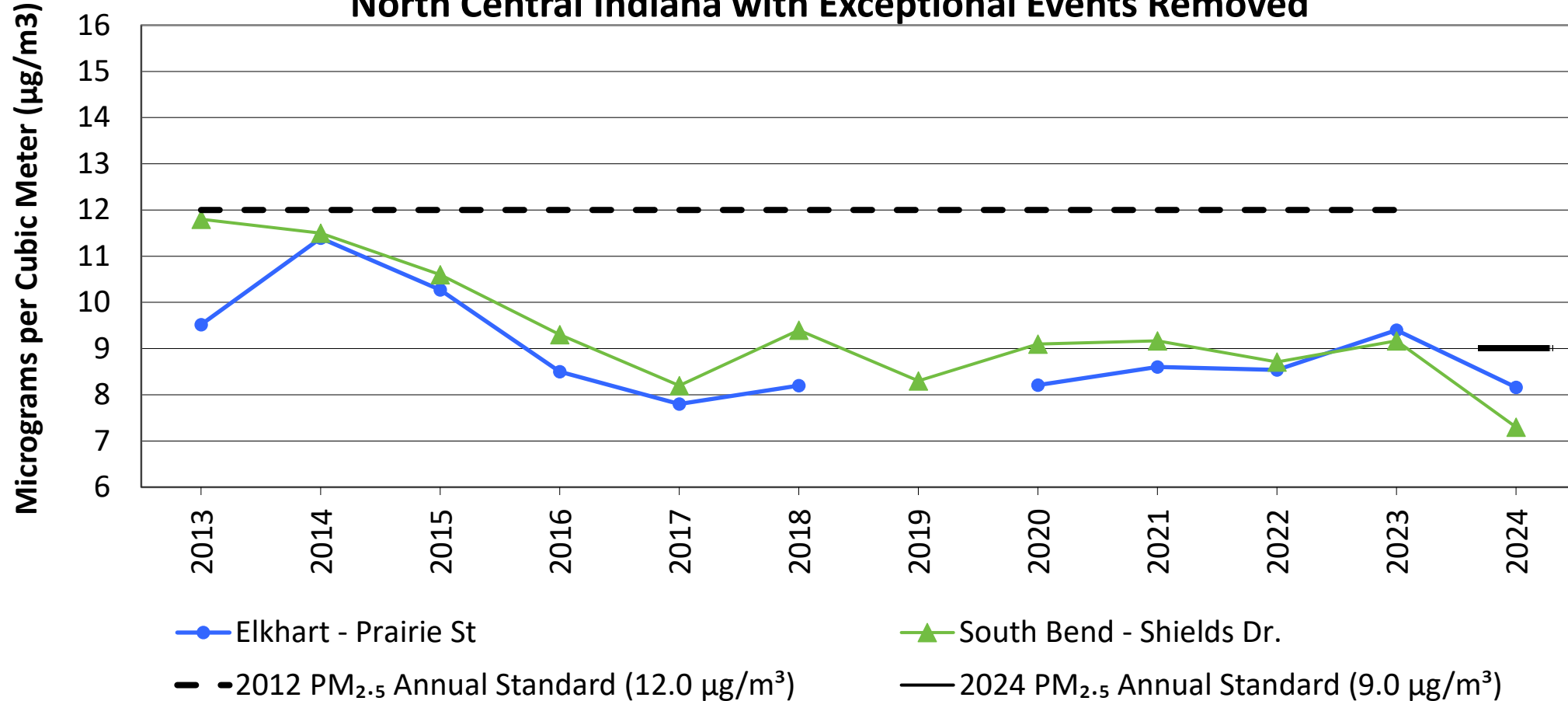
PM_{2.5}

PM_{2.5} Annual Mean Summary Trend Chart North Central Indiana



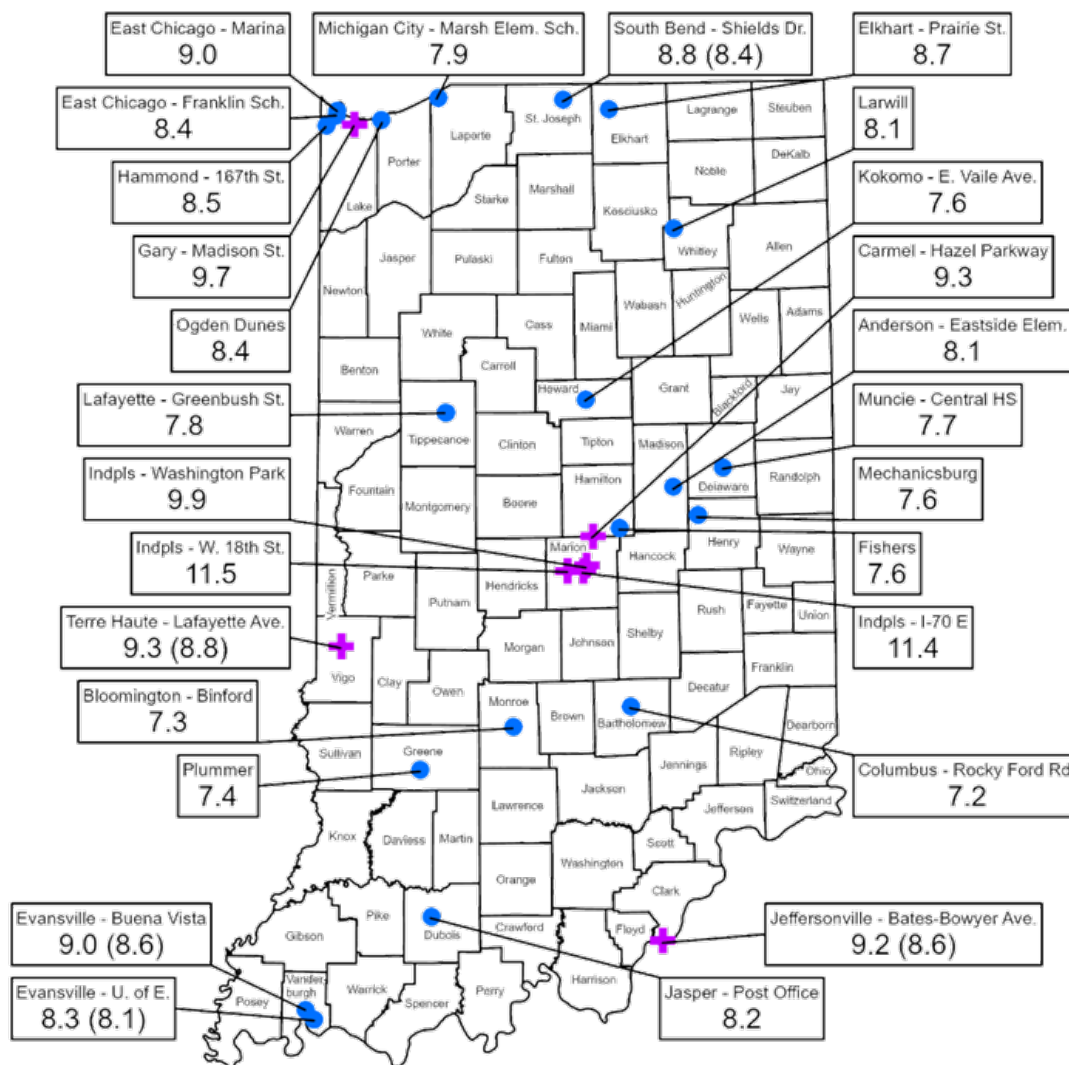
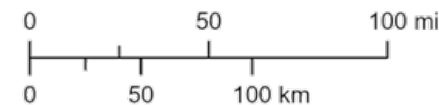
PM_{2.5}

PM_{2.5} Annual Mean Summary Trend Chart
North Central Indiana with Exceptional Events Removed



PM_{2.5} Annual Design Values 2022 - 2024

Standard set at
9.0 $\mu\text{g}/\text{m}^3$



- PM_{2.5} monitor with design value less than or equal to the standard.
- ✚ PM_{2.5} monitor with design value greater than the standard.

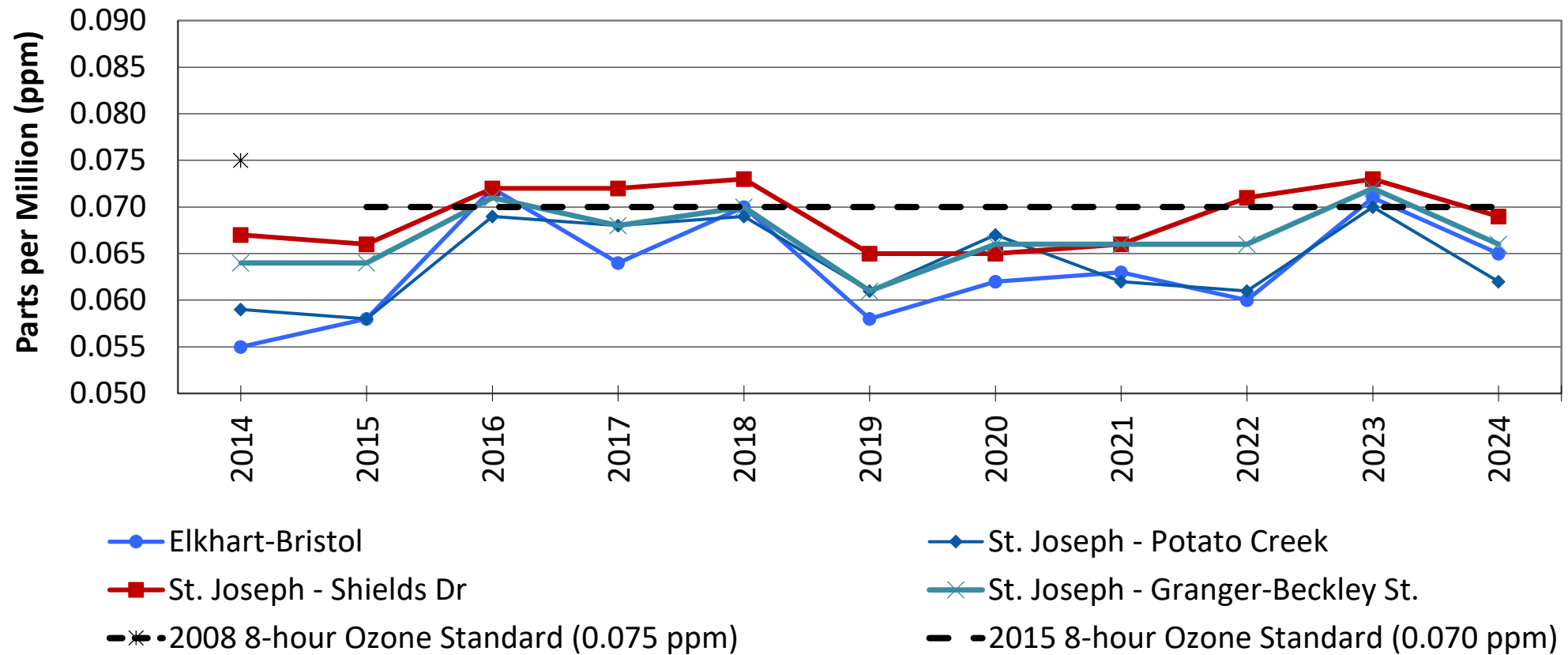
Notes:

- Map excludes monitors with an invalid design value.
- Posted data are in units of micrograms per cubic meter ($\mu\text{g}/\text{m}^3$).
- (#.#) Represents design values with exceptional events removed.

Mapped By: C. Mitchell, OAQ
Date: 03/27/2025
Source: IDEM, Air Monitoring
Map Projection: UTM Zone 16 N
Map Datum: NAD83

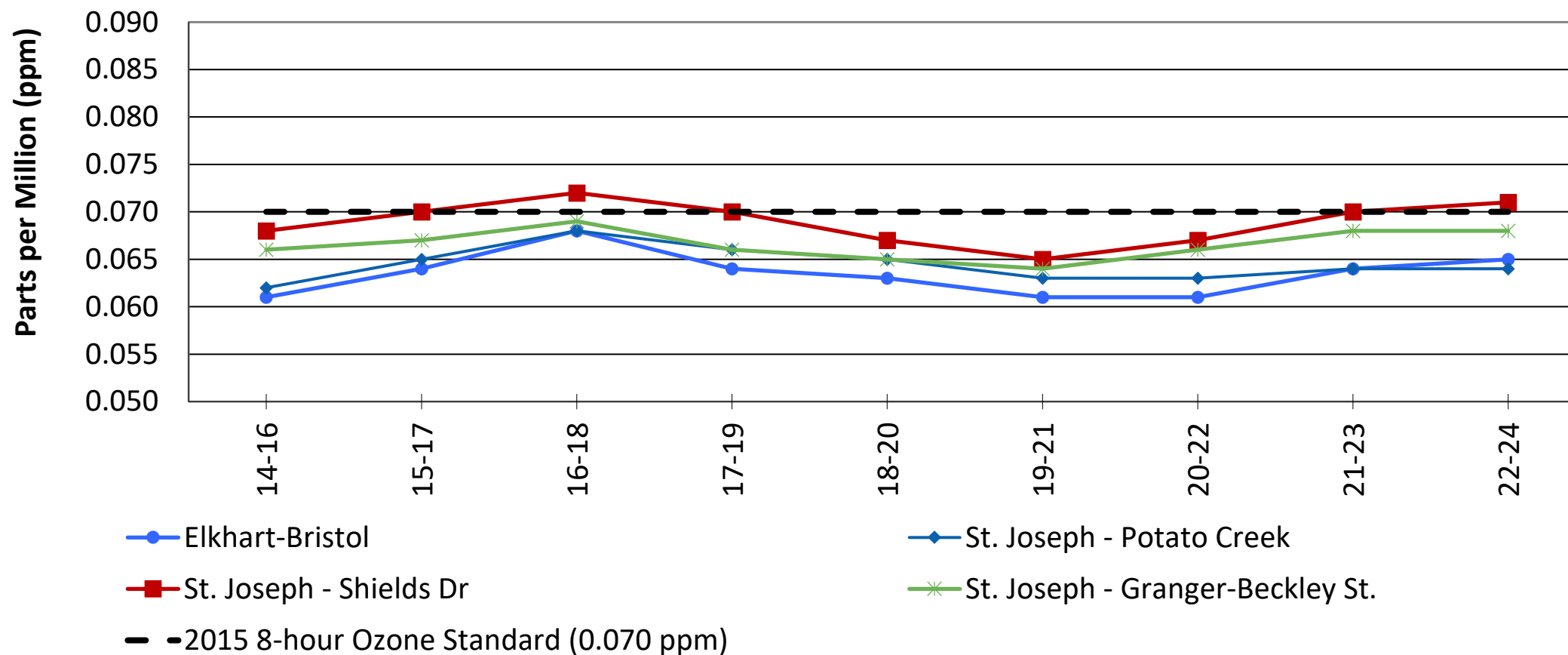
Ozone

Ozone 4th - High Values Trend Chart North Central Indiana



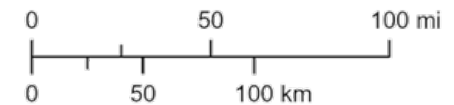
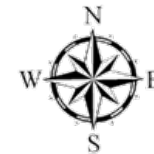
Ozone

Ozone Design Values Trend Chart North Central Indiana



Ozone 8-Hour Design Values 2022 - 2024

Standard set at
0.070 ppm

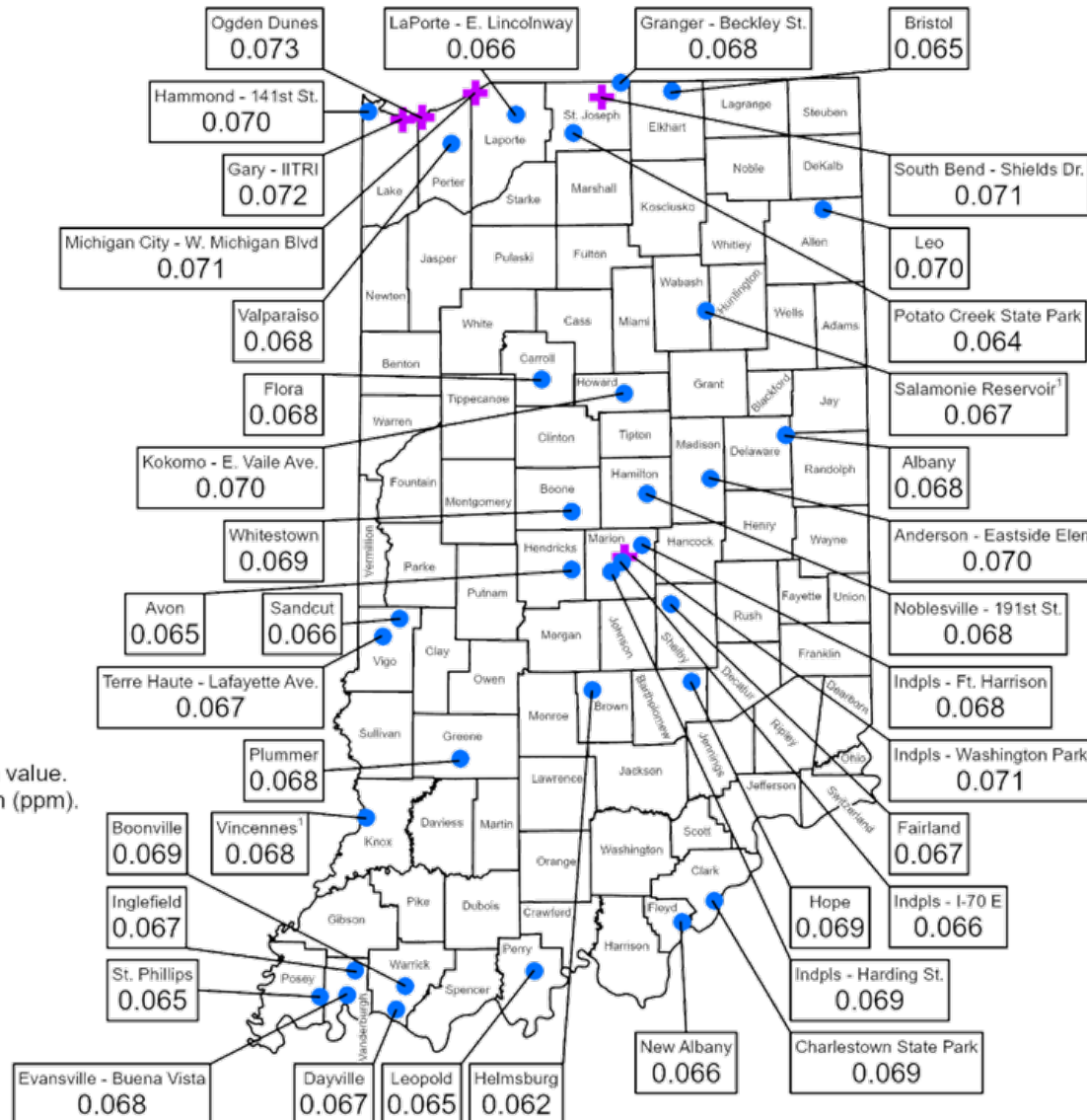


- Ozone monitor with design value less than or equal to the standard.
- ✚ Ozone monitor with design value greater than the standard.

Notes:

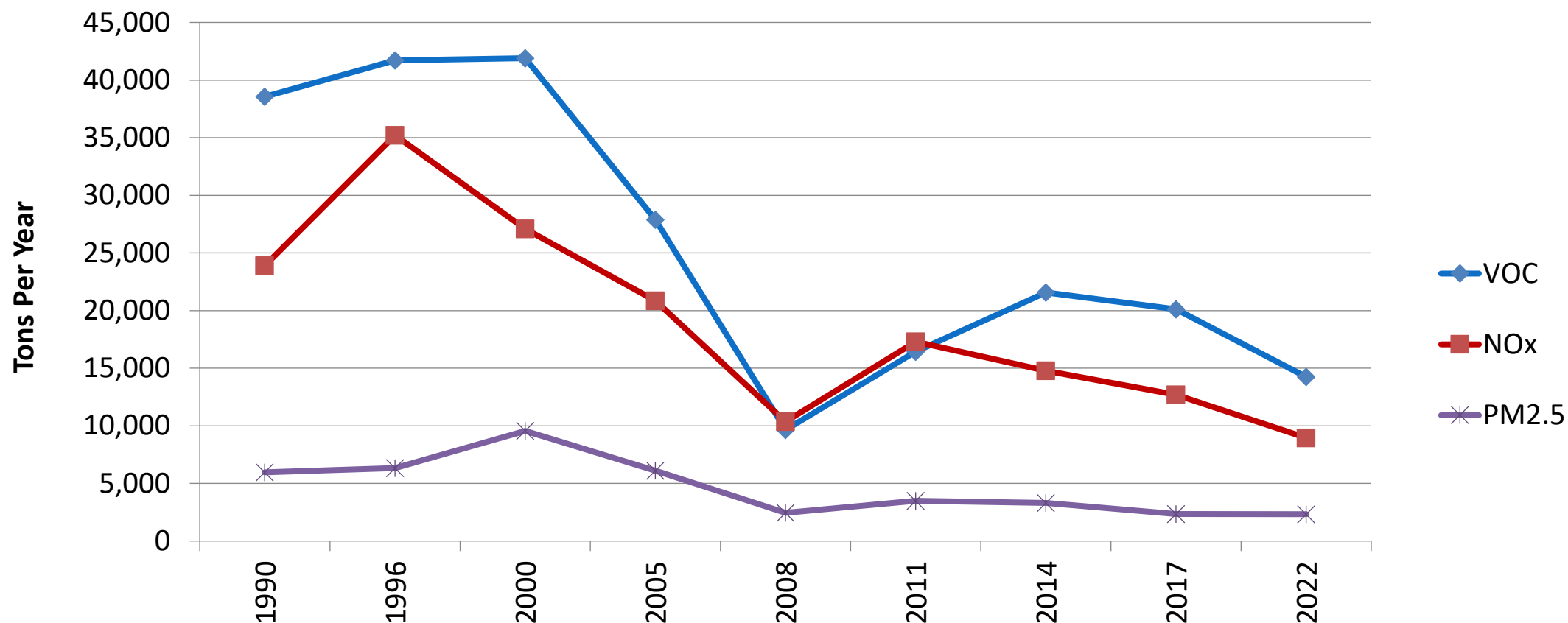
- Map excludes monitors with invalid design value.
- Posted data are in units of parts per million (ppm).
- 1 indicates monitors owned and operated by the U.S. Environmental Protection Agency (U.S. EPA).

Mapped By: C. Mitchell, OAQ
Date: 03/28/2025
Source: IDEM, Air Monitoring
Map Projection: UTM Zone 16 N
Map Datum: NAD83



Long-Term Emission Trends

Emission Trends – Elkhart and St. Joseph Counties



Emissions based on U.S. EPA's National Emissions Inventory (NEI) data. U.S. EPA has discouraged the use of 2020 NEI data.

Current Schedule for Ongoing National Ambient Air Quality Standards (NAAQS) Review

NAAQS Review/Updates

	Ozone	Lead	Primary NO ₂	Primary SO ₂	Secondary NO ₂ , SO ₂ , PM (Ecological Effects Only) ⁴	PM ⁵	CO
Last Review Completed Final Rule Signed	Dec 2020	Sept 2016	April 2018	Feb 2019	Dec 2024	Feb 2024	Aug 2011
Recent or Upcoming Major Milestone(s)	Currently Under Review Draft IRP ¹ Volumes 1 and 2	Currently Under Review Final ISA ²	Currently Under Review Draft IRP ¹ Volumes 1 and 2	TBD ³	TBD ³	State designation recommendations were due Feb 2025 EPA required to promulgate final area designations by Feb 2026	TBD ³

¹ IRP – Integrated Review Plan.

² ISA – Integrated Science Assessment.

³ TBD – To Be Determined.

⁴ U.S. EPA replaced the existing 3-hour SO₂ standard with a new annual standard. To attain the standard, the three-year average cannot exceed 10 parts per billion (ppb).

⁵ U.S. EPA revised the annual primary and secondary PM_{2.5} NAAQs from 12.0 to 9.0 milligrams per cubic meter (µg/m³).



GOEVIN Charging Infrastructure Funding Opportunity



Charging Equipment Types and Available Funding

GOEVIN is providing funding opportunities for two (2) types of publicly available EV charging equipment:

- Direct-Current Fast Charge (DCFC)
 - Typically charges 140 miles in around 20 minutes
 - Best suited to highway and interstate travel between communities
 - GOEVIN has allocated \$3,176,000 for DCFC charging equipment across Indiana
- Level 2 (L2)
 - Typically charges 149 miles in around 210 minutes
 - Best suited to destination refresh charging in municipal and retail sectors
 - GOEVIN has allocated \$169,000 for L2 charging equipment across Indiana



Eligible Applicants

Eligible applicants for this program include, but are not limited to:

- For-profit businesses registered with the Indiana Secretary of State
- Nonprofit entities registered with the Indiana Secretary of State
- Federal, state, and local government agencies
- Indiana-based metropolitan planning organizations



Eligible Charging Equipment Cost-Share Requirements

GOEVIN will cover costs associated with publicly available DCFC and L2 EV charging equipment at the following rates.

EV Charging Equipment Type		Maximum Funding and Percentage
Direct-Current Fast Charge (DCFC)	Maximum Dollars per Location	\$200,000
	Maximum Percentage of Project	75%
Level 2 (L2)	Maximum Dollars per Location	\$10,000
	Maximum Percentage of Project	75%

For More Information



- **IDEM's Office of Air Quality:**
www.idem.IN.gov/airquality
- **Indiana Volkswagen Mitigation Trust Program:**
[IDEM: Air Quality: Volkswagen Environmental Mitigation Trust](#)
- **GOEVIN Program:** GOEVIN.com
- **For program assistance:**
Shawn Seals
- Senior Environmental Manager
- IDEM – Office of Air Quality
- 317-233-0425
SSeals@idem.IN.gov

